

The Beamforming Microphone Array is the Pro-Audio industry's first professional-grade microphone array with beamforming and adaptive steering technology and ClearOne's next-generation Acoustic Echo Cancellation. The ultra-sleek design fits into any conferencing environment and delivers the clearest audio pickup available with adaptive acoustic processing.



Applications

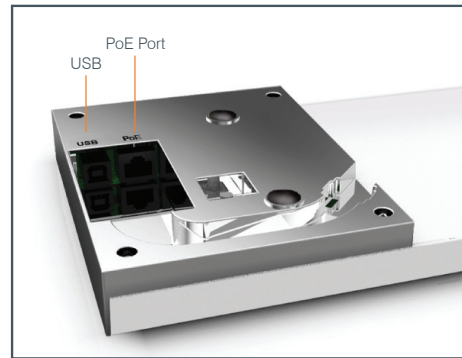
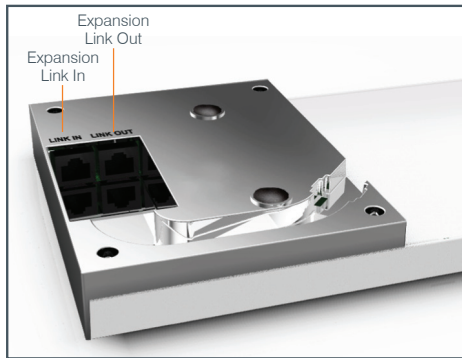
- Board Room
- Conference Room
- Training Center
- Courtroom
- House of Worship
- Telepresence

Features

- + Beamforming & adaptive steering technology
- + Next-generation Acoustic Echo Cancellation
- + 24 microphone elements
- + Mono and stereo modes for diverse applications
- + Flexible mounting for ceiling, wall and tabletop
- + Works with CONVERGE® Pro products: 880, 840T, 880T, 880TA
- + Expandable for larger room applications by daisy-chaining up to three arrays per CONVERGE® Pro unit
- + Adaptive acoustic processing automatically adjusts to room configuration for best possible audio pickup
- + Replaces up to 10 traditional microphones, with twice the pickup range



BEAMFORMING MICROPHONE ARRAY CONNECTIONS



Functional Specifications

AUDIO

ACOUSTIC CHARACTERISTICS:

24 microphones
 Auto voice tracking
 Polar Pattern: Custom
 Frequency Response: 150Hz - 16kHz
 Signal to Noise Ratio: > 70 dB
 AEC Tail time: 128 ms
 Noise Cancellation: 6 - 15 dB adjustable

AUTO MIXER PARAMETERS:

Number of Open Microphones (NOM)
 First mic priority mode
 Last mic mode
 Maximum number of mics mode
 Ambient level
 Gate threshold adjust
 Off attenuation adjust
 Hold time
 Decay rate

MATRIX MIXING PARAMETERS:

1 Channel In
 18 Expansion Bus In/Out

BEAMFORMING MIC ARRAY CONFIGURATION:

Echo cancellation on/off
 Noise cancellation on/off
 Filters:
 All Pass
 Low Pass
 High Pass
 Notch
 PEQ
 ALC on/off
 Gain adjust
 Mute on/off
 Auto gate/manual gate

POWER

PoE IEEE 802.3AF-2003
 CAT-5 cable or higher
 6 watts average power consumption

EXPANSION BUS IN/OUT

Proprietary Network
 RJ-45 (2)
 Solid core Category 5e or Category 6 cable, factory terminated, for 200 feet maximum length between any two devices connected through Expansion bus

USB

Not currently supported. Available for future use

RS232

Commands through CONVERGE Pro

CONFIGURATION & ADMINISTRATION SOFTWARE:

CONVERGE Console (4.x)

WEIGHT

4.4 lbs (2.0kg)

MECHANICAL

DIMENSION (WxHxW)

30" x 1" x 5.75" (WxHxD) (762mm x 25.4mm x 146mm)

MOUNTING

Ceiling mount kit (12", 24", 36", and 48" suspension column)
 Wall mount kit
 Table mount

ENVIRONMENTAL

OPERATING TEMPERATURE

14° F/-10° C to 122° F/50° C ambient temperature

INSTALLATION

OPTIMUM COVERAGE DISTANCE:

About 6 - 10 traditional cardioid mics
 About 2 - 3 ClearOne ceiling mic array
 About 8' - 10' radius

SUPPORTED CONVERGE PRO*

CONVERGE Pro 840T
 CONVERGE Pro 880
 CONVERGE Pro 880T
 CONVERGE Pro 880TA

*Maximum 3 Beamforming microphone array per each supported CONVERGE Pro unit and maximum 16 units in one stack

PART NUMBERS

910-001-003:

White Beamforming Microphone Array

910-001-003-B:

Black Beamforming Microphone Array

910-001-005-12:

White Ceiling Mount kit with 12" suspension column

910-001-005-12-B:

Black Ceiling Mount kit with 12" suspension column

910-001-005-24:

White Ceiling Mount kit with 24" suspension column

910-001-005-24-B:

Black Ceiling Mount kit with 24" suspension column

910-001-005-36:

White Ceiling Mount kit with 36" suspension column

910-001-005-48:

White Ceiling Mount kit with 48" suspension column

910-001-006:

White Wall Mount kit for BFM Array

910-001-006-B:

Black Wall Mount kit for BFM Array

ClearOne Contacts

North America

Tel: + 801.975.7200
 Toll Free: +800.945.7730
 TechSales: +1.800.705.2103
 Fax: +801.303.5711
 sales@clearone.com

Europe & Oceania

Tel: +44.1454.616.977
 global@clearone.com

Asia Pacific

Tel: +852.3590.4526
 global@clearone.com

Latin America

Tel: +801.974.3621
 global@clearone.com

Middle East

Tel: +852.3590.4526
 global@clearone.com