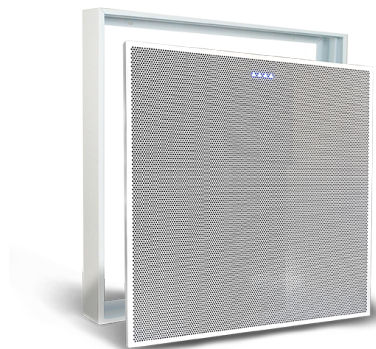


ClearOne® Aura™

With **Aura**,  
Professionals can  
now **Re-imagine**  
their **Workspaces**  
at **Home**



## Xceed™ BMA



Features a USB audio-enabled Beamforming Ceiling Microphone Array that brings cost-effective and superb conferencing audio to your professional home office.

## Aura Professional Home Office Solution

Dramatically enhances the audio and video experience for any **cloud-based video collaboration** application for your **professional home office**

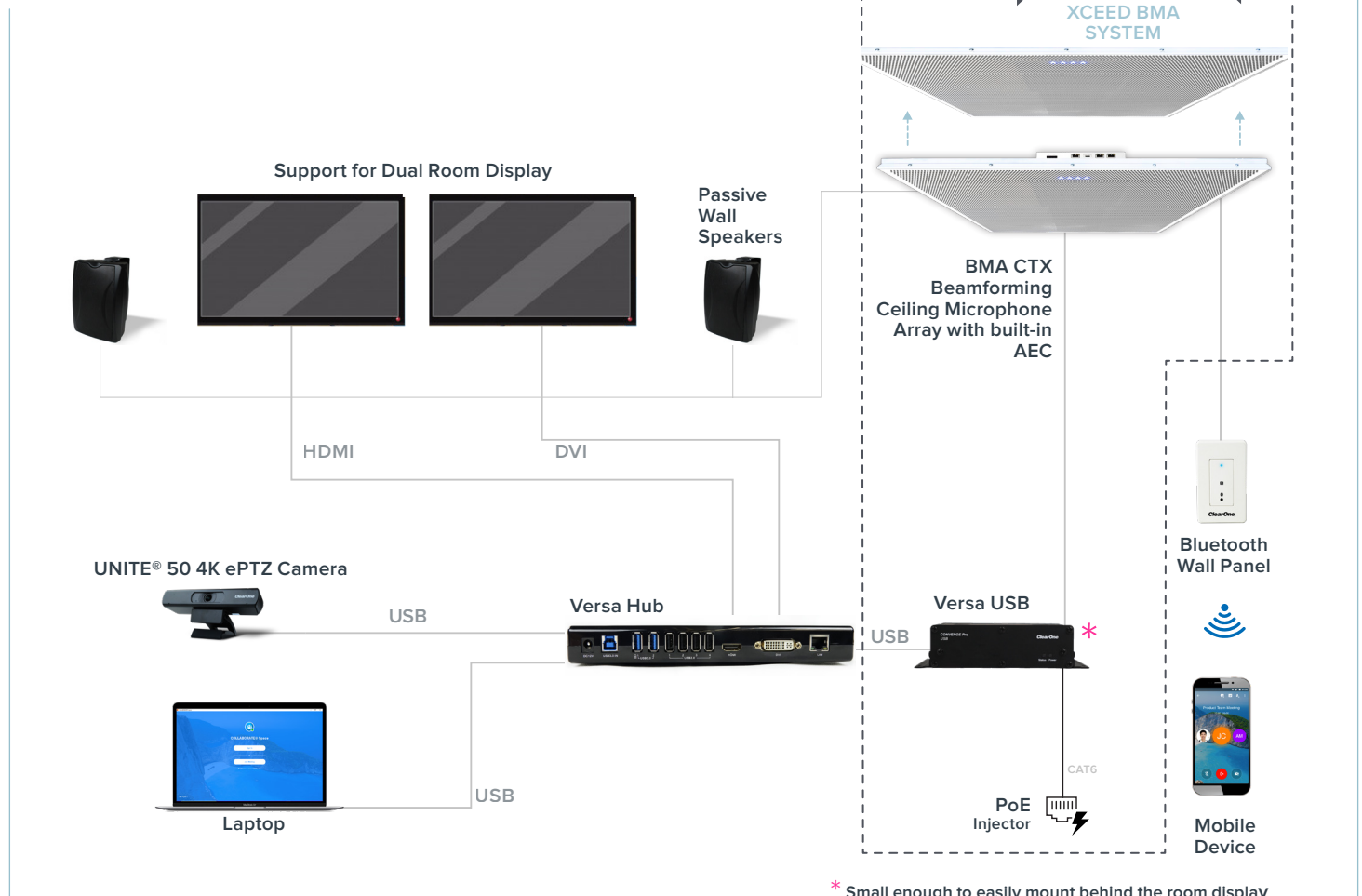


## Highlights

- ✦ BMA CTX with built-in AEC and adaptive steering (think of it as smart switching) provides the same impeccable room coverage as the BMA CT.
- ✦ Compatible with popular applications such as COLLABORATE® Space, Microsoft® Teams, WebEx™, Zoom™, Google® Meet™, and more.
- ✦ 24-in or 600 mm microphone array with a variety of mounting options.
- ✦ FREE COLLABORATE® Space lifetime subscription — ClearOne’s high quality award-winning cloud-based video collaboration application.
- ✦ Includes 2x10 Watt power amps to drive passive wall speakers.
- ✦ Complete your system with any UNITE® conferencing camera.
- ✦ Connect laptop or room PC to the BMA CTX directly through the USB port on the Versa USB. The included 50-foot CAT6 cable connects the Versa USB to the BMA CTX.
- ✦ Add a Versa Hub for single-cable connection for cloud-based collaboration.
- ✦ Delivering superb coverage and quality at an unbeatable price, the Xceed BMA is easy to install and easy to use.
- ✦ Add ClearOne’s Bluetooth Wall Panel to enable mobile devices to join the conference wirelessly. The Bluetooth Wall Panel makes this system smart speaker ready. Supports Alexa, Cortana, Google Home, and Siri.

## Aura Professional Home Office Application

Complete your Xceed BMA setup by adding other ClearOne Aura products



## Specifications

- + AUR-3200-010 Xceed BMA
- + AUR-3200-010-I Xceed BMA Intl

### INCLUDES

- + 24in (North America):
  - AUR-3200-205 BMA CTX 24-in
  - 910-3200-210 BMA Surface-Mount Kit 24in
- + 600mm (International):
  - AUR-3200-205-I BMA CTX 600mm
  - 910-3200-210-I BMA Surface-Mount Kit 600mm
- + All include:
  - AUR-3200-305 Versa USB
  - 910-3200-202 PoE+ Power Supply Kit
  - 910-3200-204-50 RJ45 CAT6 Cable – 50'
  - Free COLLABORATE® Space lifetime subscription

### BMA CTX

- + Number of Beams: Two patterns, either 5 or 6 beams
- + Polar Pattern: Custom
- + Frequency Response: 150 Hz – 16 kHz, +/- 3 dB
- + Dynamic Range: 150 Hz – 16 kHz, > 70 dB
- + AMPLIFIER OUTPUT
  - Type: 5.08mm black header, Phoenix/Euroblock type
  - Audio: 2 channels
  - Output power: 2x10 W Max, 8Ω load\*
  - Frequency Response: 20 Hz – 22 kHz @ +10 dBu, +/- 0.5 dB
- + POWER SELECTION SWITCH
  - Type: Slide Switch
  - Toggle towards P-Link to power device by P-Link
  - Toggle towards PoE to power device by PoE Injector
- + MOUNTING
  - Ceiling mount (24" or 600 mm)
- + MECHANICAL
  - 24" BMA CTX: + 23.72 x 23.72 x 2.13" (602.5 x 602.5 x 54.1 mm)
  - 600 mm BMA CTX: + 592.5 x 592.5 x 54.1 mm (23.33 x 23.33 x 2.13")
  - Weight: 7.7 lb (3.5 kg)

### VERSA USB

- + Port Type: USB-B connector
- + Audio: Digital audio, 2 x 2 bidirectional channels
- + Sample Rate: 48 kHz
- + Sample Bit Depth: 24 Bit
- + Compatibility: USB 2.0, USB 3.0
- + USB Cable Distance: 16' (5 m)
- + Compatible: Windows & MAC OS devices
- + P-LINK PERIPHERAL BUS
  - Ports Type: RJ-45 (Cat5e or Cat6)
  - P-Link In & Out: Proprietary peripheral bus
  - PoE 802.3af Mode B, Midspan
  - Power on "spare pairs" 4,5 and 7,8
  - Cable: Solid-core 24 AWG, factory-terminated Cat5e or Cat 6 cable
  - Distance: Up to 200' (60 m)
- + POWER SELECTION SWITCH
  - Type: Slide Switch
  - Toggle towards P-Link to power device by P-Link
  - Toggle towards PoE to power device by PoE Injector
- + PoE IN PORT
  - Port Type: RJ-45 port
  - PoE: 802.3af or 802.3at PoE/PoE+ injector input
- + MOUNTING
  - Rack-shelf mount
  - Under-the-table mount
  - Wall mount behind display
- + MECHANICAL
  - Without rack ears: 5.5 x 1.6 x 4.1" (144 x 42 x 103 mm)
  - With rack ears: 6.8 x 1.7 x 4.1" (172 x 43 x 103 mm)
  - Weight: 0.88 lb (0.4 kg)

## Specifications

### POWER

- + Power Type: PoE/PoE+
- + Port Type: RJ-45
- + PoE In/P-Link In: 802.3af or 802.3at PoE/PoE+
- + Power Source: PoE Injector or equivalent
- + PoE: IEEE 802.3at compliant devices providing 56V and 640 mA (36 W).
- + P-Link In - Mode B
- + Power Consumption:
  - 100-240 VAC, 50/60 Hz, 3 Watts Typical
  - 38 W at max power 1kHz (2 x 10 W)

### OPTIONAL CLEARONE PERIPHERALS

- + AUR-3200-303 Bluetooth Wall Panel
- + AUR-3200-305 Versa USB
- + AUR-151-010-B Passive Wall Speakers
- + AUR-3200-204-50 RJ45 CAT6 Cable – 50'
- + 910-3200-702-30 USB 3.0 Cable – 33'
- + 693-153-050 Speaker Cable – 50'

### ENVIRONMENTAL

- + Thermal: 130 BTU/Hr at max power
- + Operating Temperature: 14° F - 104° F (-10° C - 40° C) ambient temperature

## Sales & Inquiries

### Headquarters

5225 Wiley Post Way  
Suite 500  
Salt Lake City, UT 84116

### Headquarters

US: +1.801.975.7200  
International: +1.801.975.7200

### Aura Sales

US: +1.888.HEY.AURA  
International: +1.801.975.7200  
aurasales@clearone.com

### Aura Tech Support

US: +1.888.HEY.AURA  
International: +1.801.975.7200  
auratechsupport@clearone.com