

ClearOne® Aura™

Quick-Start Guide



CHAT® 150
USB SPEAKERPHONE

CHAT 150 USB SPEAKERPHONE

CONTACT INFORMATION

Headquarters

5225 Wiley Post Way
Suite 500
Salt Lake City, UT 84116
US: +1.801.975.7200
International: +1.801.975.7200

Aura Sales

US: +1.888.HEY.AURA
International: +1.801.975.7200
aurasales@clearone.com

Aura Tech Support

US: +1.888.HEY.AURA
International: +1.801.975.7200
auratechsupport@clearone.com

NOTICES

U.S. PATENTS: D539,274; D556,189; D531,999.

OTHER PATENTS PENDING.



Caution: Read the safety information in the instruction manual.

© 2021 ClearOne All rights reserved.

Information in this document is subject to change without notice.

Document number QSG-0126-002v1.1 February 2021

Table of Contents

CONFIGURING THE CHAT 150.....	1
CHAT 150 FEATURES	2
CONNECTING YOUR CHAT 150	3
CONNECTING THE CHAT 150 TO A PC	3
CONFIGURING AND TESTING YOUR CHAT 150.....	4
CHAT 150 AUDIO CONFIGURATION.....	4
CHATATTACH™ : CONNECTING TWO CHAT DEVICES	5
USING THE CHAT 150.....	6
CHAT 150 LED INDICATORS.....	6
VOLUME & MUTE BUTTONS	6
CHAT 150 SPECIFICATIONS AND REQUIREMENTS	7
SYSTEM REQUIREMENTS	7
CONNECTIONS	7
AUDIO	7
SPEAKER	7
MICROPHONE(S)	7
POWER.....	7
CONTROLS	7
ENVIRONMENTAL.....	7
PROCESSING	7
LINE INPUT/OUTPUT VIA VC BoB	7
MECHANICAL	7
COMPLIANCE	7
MODEL NUMBERS	7

CHAT 150 USB SPEAKERPHONE

CONFIGURING THE CHAT 150

The CHAT 150 can be used right out of the box and there's no software to download or install if it is to be used only with a PC.

CHAT 150 FEATURES

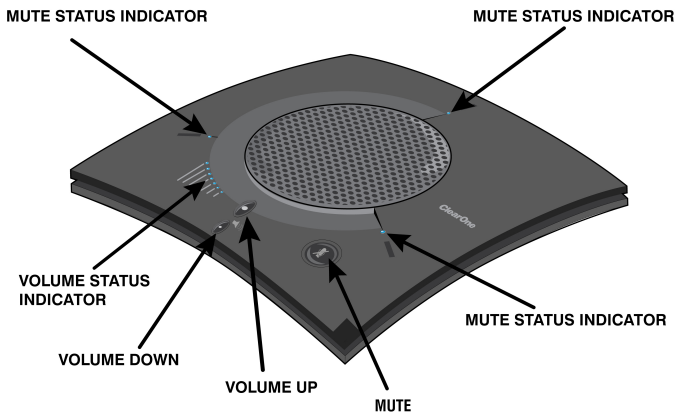


Figure 1. CHAT 150 Features

Important! CHAT devices are designed to work on flat, stable surfaces with no obstructions. For best results, do not hold or move the device while in use.

CONNECTING YOUR CHAT 150

The following describes how to connect your CHAT 150 to a PC.

The CHAT 150 can also be connected to a number of other devices. For information on connecting the CHAT 150 to other devices, refer to the CHAT 150 User's Manual.

CONNECTING THE CHAT 150 TO A PC

Use the included USB 2.0 cable to connect the CHAT 150 to your PC (Figure 2).

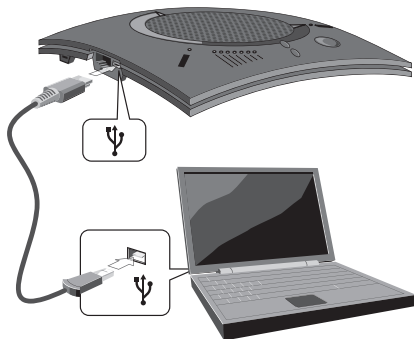


Figure 2. Connecting to a PC

CHAT 150 USB SPEAKERPHONE

CONFIGURING AND TESTING YOUR CHAT 150

CHAT 150 AUDIO CONFIGURATION

The CHAT 150 derives its audio settings from the Windows sound settings if it is attached to a PC or through the 3rd party application's settings (COLLABORATE Space, Zoom, Microsoft Teams, Skype, etc.)

Consult the CHAT 150 User's Manual for advanced device configuration procedures if needed.

USING THE CHAT 150

CHAT 150 LED INDICATORS

The three microphone LED indicators illuminate blue when the CHAT 150 microphones are active. The indicators illuminate red when the microphones are muted.

The seven volume LED indicators illuminate blue to indicate the current volume setting—more lights indicate higher volume.

VOLUME & MUTE BUTTONS

Use the **Volume Up/Down** buttons (indicated by a large dot and a small dot) to adjust the volume level of the CHAT 150. Holding down either button will change the volume rapidly.

Use the **Mute** button to mute the CHAT 150's microphone until the **Mute** button is pressed again. If you are using the CHAT 150 with a PC, you can also use the Speaker Volume Control in Windows, as well as the CHAT software to adjust the volume and mute the microphone.

QUICK-START GUIDE

SPECIFICATIONS AND REQUIREMENTS

System Requirements

Microsoft Windows 7 or later
MacOS X v10.10 "Yosemite" or later

Connections

USB:

2.0 Compatible, Type: Mini-B Female

RJ-45: Keyed 8-conductor

Audio

Speaker

Bandwidth: 190 Hz – 20 kHz

Maximum Output Level:
85 dB SPL @ 1 foot (0.30 meter)

Microphone(s)

Bandwidth: 50Hz – 7.75 kHz

Power

USB:

5 VDC @ 500mA Maximum

External:

100 - 240 VAC Input, 9 VDC @ 560 mA
Output, Tip: Power, Ring: Ground

Controls

Volume Up
Volume Down
Microphone Mute

Environmental

Operating Temperature:
41 - 104° F (5 - 40° C)

Processing

Full Duplex
Distributed Echo Cancellation
(D. E. C.)®
Noise Cancellation (NC)
Automatic Level Control (ALC)
Line Echo Cancellation (LEC) -
Selectable
First Mic Priority

Mechanical

Dimensions (W x D x H):
7.4" x 7.4" x 1.8"
(18.8 cm x 18.8 cm x 4.6 cm)
Weight: 1.17 lbs (0.53 kg)

Compliance

RoHS
FCC Class A Part 15
ICES-003, CE, UL Listed

Model Numbers

AUR-156-200 CHAT 150 USB