

CONVERGE® Pro 2 BMA Mute Sync with Cisco® Room Kit

The Mute Sync feature synchronizes the ClearOne BMA mute status with the Cisco Room Kit microphone mute status. It supports the simultaneous use of multiple BMA devices on a single P-Link chain connected to a CONVERGE Pro 2 (CP2).

Related Information

- [CONVERGE Pro 2](#)
- [BMA 360](#)
- [BMA CT](#)
- [CONSOLE AI Software Download](#)

ClearOne CONVERGE Devices that Support Cisco Room Kit Mute Sync

- CP2 v8.3.x.x (or later)
- BMA 360 v1.0.5.3 (or later)
- BMA CT v1.1.0.8 (or later)
- BMA 2 v1.0.4.5 (or later)
- CONSOLE AI v7.4.x.x (or later)

USB to RS-232 Adapter

To connect the Cisco Codec and the CONVERGE Pro 2, a USB to RS-232 adapter is needed. The adapter must have a USB 2.0 Type A connector on one end and a DB9 male connector on the other end.

An example is the [TRENDnet® TU-S9 USB toSerial Converter](#).

Hardware Connections

One CP2 can support any combination of BMA 360, BMA CT, and BMA 2, with a maximum of three of each type on the P-Link chain.

Figure 1 below indicates the connections.

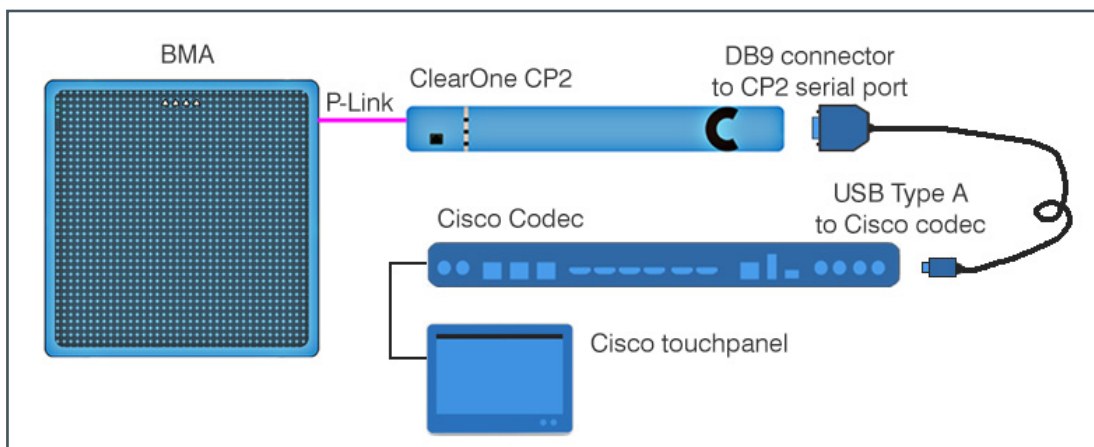


Figure 1. Connections for CP2 BMA Mute Sync with Cisco Room Kit

Enabling Mute Sync Support on the Cisco Room Kit

The default setting for Support for third-party USB input devices is **disabled**.

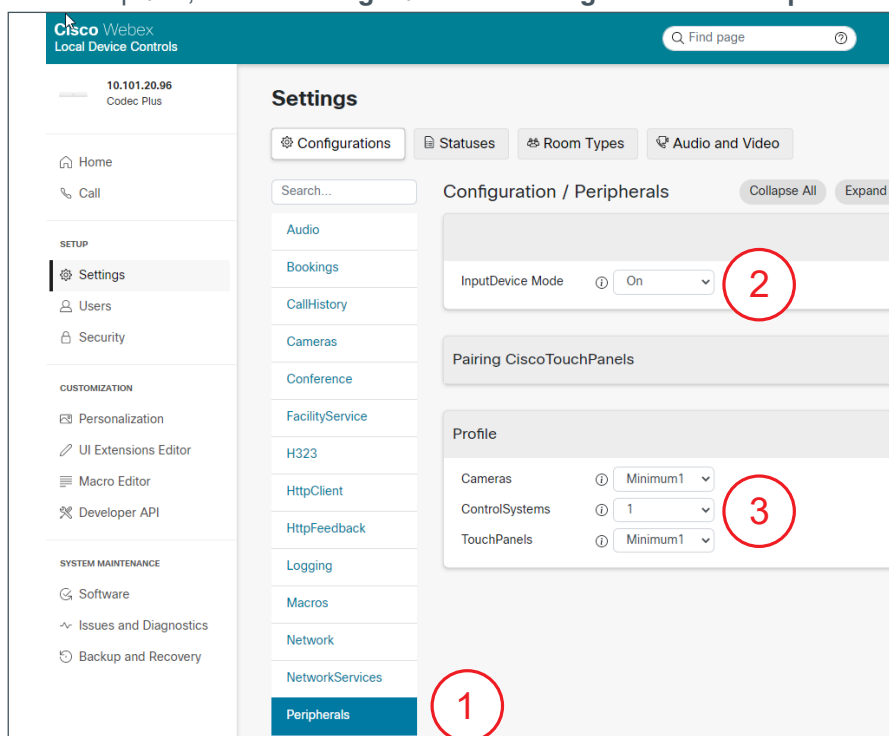
The following settings in the Cisco Room Kit enable support for the USB to RS-232 adapter:

- Peripherals > InputDevice > Mode: **On**
- Control Systems: **1**
- LoginRequired: **Off**

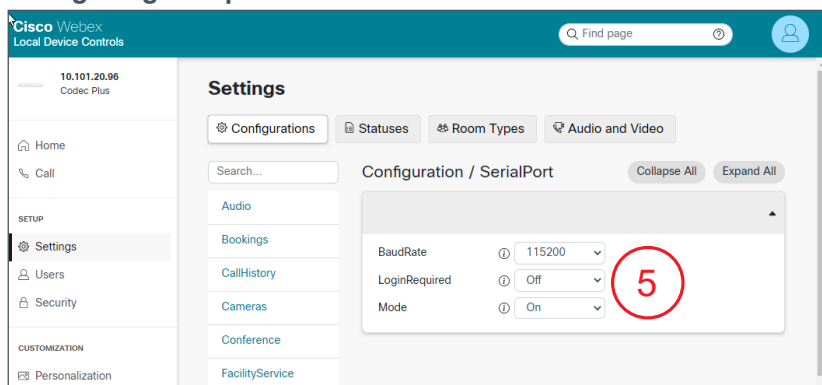
Example Web Browser*

Using a web browser, enter the IP address of the Cisco codec. The default login is 'admin' with no password.

1. In the left panel, **select Settings** and then **Configurations > Peripherals**.



2. **Change InputDevice > Mode to On.**
3. **Set ControlSystems to a value of 1.**
4. **Select Configurations > SerialPort.**
5. **Change LoginRequired to a value of Off.**



*Depending on whether or the Cisco codec is provisioned with Webex, a third-party, or not provisioned at all, the web page navigation for making the settings will vary. Refer to Cisco documentation for details.

Enable Mute Sync Support on the CONVERGE Pro 2 System

In CONSOLE AI, open the Device Settings of the CP2 that is connected to the Cisco codec via the USB to RS-232 Adapter.

Check the **Enable Cisco Mute Sync** check box.

This setting change can be made to the project file offline and then loaded into the system, or made live while connected.

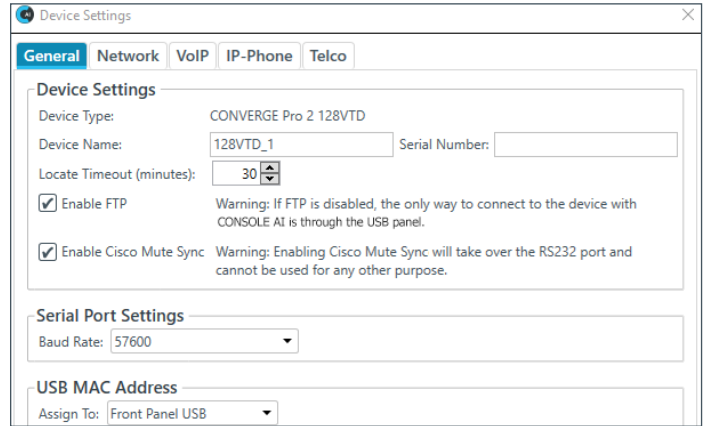


Figure 2. Enabling Cisco Mute Sync



Note the following:

- When Mute Sync is **enabled**, the system:
 - Sets the RS-232 baud rate to 115,200, n, 8, 1
 - Suspends normal operation of the RS-232 port—the port can only sync with the Cisco codec.
- When Mute Sync is **disabled**, the system:
 - Returns the RS-232 port to the previous baud settings
 - Restores normal operation of the port.

Audio Connections

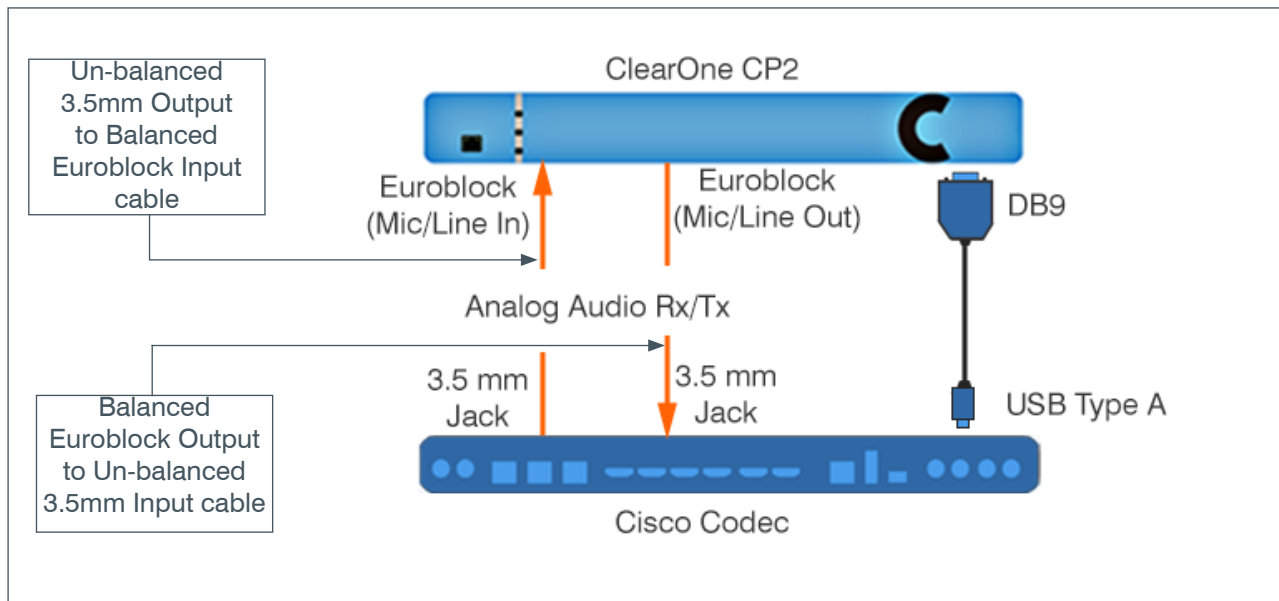


Figure 3. Audio Connections

Verify Mute Sync

To verify that Mute Sync is functional, complete the following steps:

1. On the Cisco Touch Panel screen, in the upper left, **select** the **contact information**.
2. **Select “Settings”, then select “Issues and diagnostics”**
3. **Select “Microphone check”**.
The system displays the Microphone page with an audio level meter for each of the three microphone inputs.
4. **Ensure** that the **output** of the CP2 is connected to one of the microphone inputs.
5. **Verify** that **when you talk** into the BMA, the **microphone level meter moves** accordingly.
6. In the lower-right of the touch panel (on the touch panel case, not the screen), **press** the physical **“Mute” button**.
The color of the button changes from green to red.
7. **Verify** that the BMA LEDs have **changed from blue to red**.
8. **Press** the physical **“Mute” button** again to **change it back to green**.
9. **Verify** that the BMA LEDs have **changed back to blue**.

SALES AND INQUIRIES

Headquarters

5225 Wiley Post Way Suite 500
Salt Lake City, UT 84116

Headquarters

Main: +1.801.975.7200

Sales

Tel: +1.801.975.7200
sales@clearone.com

Tech Support

Tel: +1.801.974.3760
audiotechsupport@clearone.com