

How to Enable AES67 for ClearOne Devices

AES67 is a technical standard for audio over IP and audio over Ethernet (AoE) interoperability.

ClearOne Dante-enabled products use third-party software to allow use in AES67 mode.

Note the following:

- This document uses information from the “**Audinate Dante Controller User Guide for Dante Controller version 4.2.x**”. Document version 1.3, published 28 April 2020.

Related ClearOne Products

- [CONVERGE® Pro 2 Brochure](#)

Related Links

- [ClearOne Resource Library](#)
- [Audinate Dante Controller User Guide](#)
- www.audinate.com/

To enable AES67 with ClearOne devices, complete the following steps:

- From your PC, **launch the Dante Controller application**.

The application displays the Network View.

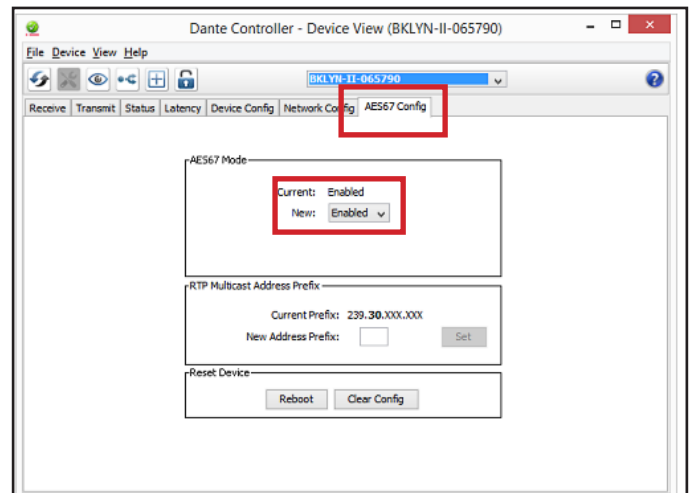
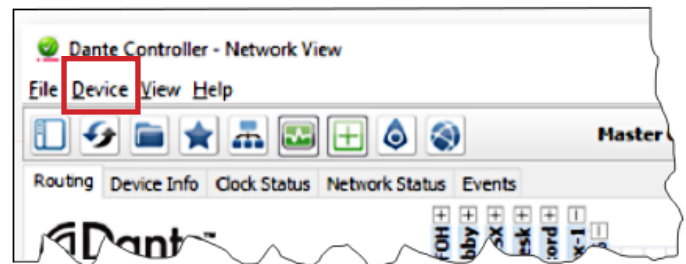
- In the top left in the menu bar, **click Device**.

The system displays the Device View.

Note: For Dante-enabled devices, the Device View includes an AES67 Config tab.

- If the AES67 tab is not already selected, **click the AES67 Config tab**.

- In the middle of the screen, from the New: dropdown, **select Enable**.



ClearOne® Contacts

Headquarters

5225 Wiley Post Way
Suite 500
Salt Lake City, UT 84116

Sales

Tel: 801.975.7200
e-mail: sales@clearone.com

US & Canada

Tel: 801.975.7200
Fax: 801.303.5711

Technical Support

Tel: 801.974.3760
e-mail: tech.support@clearone.com

International

Tel: +801.974.3621
email: global@clearone.com