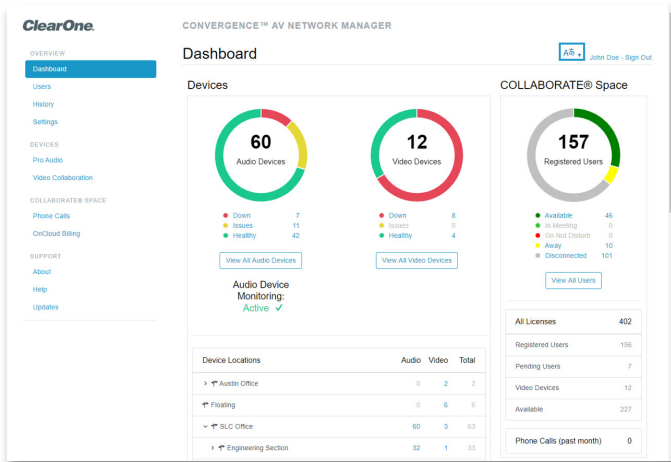


# CONVERGENCE™ AV Enterprise



CONVERGENCE software is a unified AV network management platform to monitor, control, and audit ClearOne Pro audio and video products and services.

- > Unlimited scalability designed to support organizations of any size.
- > Provides a powerful and elegant user interface on any browser from desktop to mobile.
- > Stay up to date with email notifications.
- > Search, sort, and filter to find what you need quickly.
- > Efficient batch firmware updates on multiple audio or video devices at once.
- > Download, back up, or restore project files simultaneously for multiple CONVERGE® Pro 2, Huddle devices, and their P-Link peripherals.
- > Provision CONVERGE Pro 2 VoIP lines and view VoIP registration status.
- > Configure and manage COLLABORATE® Live codecs and COLLABORATE Space user accounts.
- > Download device logs and reports for devices, users, histories, and calls.
- > Supports integration with third-party management systems via RESTful web service interface.
- > View the interface in one of the twelve languages.
- > Organizational portal for multiple user accounts with LDAP support.
- > Strong 256-bit encrypted password management for both users and devices.

### APPLICATIONS:

- Audio-system management
- Video-system management
- Web-conferencing management
- Equipment auditing

### WORKSPACES:

- Corporate campuses
- Higher education campuses
- Large government deployments
- Multi-site complexes

### Real-Time Access

Remote real-time system access provides at-a-glance and all-inclusive dashboard views.



### Two Levels of Access

Two levels of access — a secure administrator level for full access and a viewer level for monitoring.

*Great Ideas Need to be Heard and Seen!™*

# CONVERGENCE™ AV Enterprise

## PLATFORM

- Browsers supported (desktop to mobile): Firefox, Chrome, Edge, Safari, Internet Explorer
- Server installer supports Windows 7, 8, and 10 (64-bit), Windows Server 2012 R2 and above
- Integrates with on-cloud or on-premise COLLABORATE® Space Administrator

## MINIMUM HARDWARE REQUIREMENTS

- Approximate download size: 360MB
- Disk space: 2.1GB free
- Processor: 1GHz (large AV systems may require faster and multiple cores)
- RAM: 1GB free (serves over 2,000 devices)

## COMMUNICATIONS

- 20,000 simultaneous database connections allowed for devices and users
- Web server protocols: HTTP and HTTPS
- Server may be on a network protected by a firewall and remotely accessed through VPN
- Remote access through VPN. Can also be an on-premise, public-facing website on the Internet
- Internet access to use on-cloud COLLABORATE Space Administrator (collaboratespace.net)
- Minimum broadband internet connection speed of 256Kbps (512 Kbps recommended)
- FTP Internet access to download firmware and software updates
- Disable FTP on multiple devices at once for better network security or enable it for firmware and configuration transference
- UDP and TCP audio device packet data on ports 3602, 3601, and 4912
- UDP broadcast, UDP unicast and direct TCP connection via scanning, on multiple subnets
- SMTP email server access for notifications
- LDAP directory service access (ex. Active Directory)

## PRODUCTS SUPPORTED

- CONVERGE® Pro 2 DSP Mixers and peripherals
- CONVERGE Huddle DSP Mixer and peripherals
- COLLABORATE Live video codecs
- COLLABORATE Space

## INTERFACE

- Overview dashboard, user action histories, and settings
- Device lists for ClearOne Pro Audio and Video Collaboration products
- User Sign-In portal showing organization name
- Multi-user account management views for both CONVERGENCE and COLLABORATE Space
- User roles: Monitor (read-only access) and Administrator (full read/write access)
- Users control their own interfaces, notifications, and general information — settings saved with account
- Organization settings tab for Administrators
- COLLABORATE Space administration of phone calls, billing, settings, and licensing
- Provides support links for application About, Help (English only), and Updates
- Application menus and views support 12 languages: English, French, Italian, Spanish, German, Portuguese, Polish, Chinese Simplified, Korean, Japanese, Arabic, and Russian
- Installer supports 10 languages (the above except Chinese Simplified and Arabic)
- RESTful Web service API documented and updated

## SECURITY

- Strong 256-bit encrypted password storage for users, devices, and external services
- OAuth2 access to COLLABORATE Space
- Password trial rate limiting
- Quality meters prevent weak passwords
- Thwarts various security-hacking attacks

## PART NUMBER

- SWR-1000-002 CONVERGENCE AV Enterprise

## SALES AND INQUIRIES

### Headquarters

5225 Wiley Post Way  
Suite 500  
Salt Lake City, UT 84116

### US & Canada

Tel: +1.801.975.7200  
Fax: +1.801.303.5711

### International

Tel: +1.801.975.7200  
global@clearone.com

### Sales

Tel: +1.801.975.7200  
sales@clearone.com

### TechSupport

Tel: +1.801.974.3760  
tech.support@clearone.com