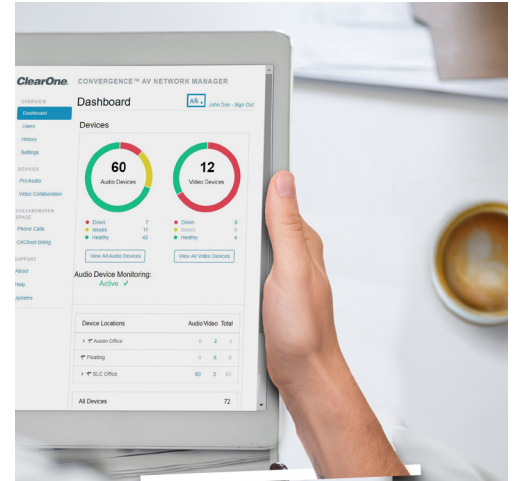
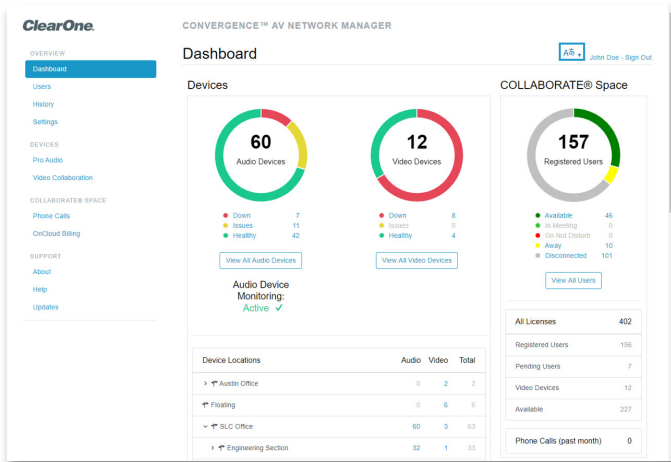


CONVERGENCE™ AV Network Manager



CONVERGENCE software is a unified AV network management platform to monitor, control, and audit ClearOne Pro audio and video products and services.

- > Organizational portal for multiple user accounts with LDAP support.
- > Unlimited scalability designed to support organizations of any size.
- > Two levels of access — secure administrator level for full access and viewer level for monitoring.
- > Stay up-to-date with email notifications.
- > Search, sort, and filter to find what you need quickly.
- > Efficient batch firmware updates on multiple audio or video devices at once.
- > Strong 256-bit encrypted password management for both users and devices.
- > Download, back up, or restore project files simultaneously for multiple CONVERGE® Pro 2, Huddle devices, and their P-Link peripherals.
- > Provision CONVERGE Pro 2 VoIP lines and view VoIP registration status.
- > Configure and manage COLLABORATE® Live codecs and COLLABORATE Space user accounts.
- > Supports integration with third-party management systems via RESTful web service interface.
- > View the interface in one of 12 languages.

APPLICATIONS:

- Audio-system management
- Video-system management
- Web-conferencing management
- Equipment auditing
- Multi-site support
- Device status monitoring
- Remote AV device control

WORKSPACES:

- Corporate campuses
- Higher-education campuses
- Large government deployments
- Multi-site organizations
- Multi-building complexes
- Office buildings
- Convention centers

Access on Your Devices

Provides a powerful and elegant user interface on any browser from desktop to mobile.



Information At Your Fingertips

Download device logs and reports for devices, users, histories, and calls.

Great Ideas Need to be Heard and Seen!™

CONVERGENCE™ AV Network Manager

PLATFORM

- Browsers supported (desktop to mobile): Firefox, Chrome, Edge, Safari, Internet Explorer
- Server installer supports Windows 7, 8, and 10 (64-bit), Windows Server 2012 R2 and above
- Integrates with on-cloud or on-premise COLLABORATE® Space Administrator

MINIMUM HARDWARE REQUIREMENTS

- Approximate download size: 360MB
- Disk space: 2.1GB free
- Processor: 1GHz (large AV systems may require faster and multiple cores)
- RAM: 1GB free (serves over 2,000 devices)

COMMUNICATIONS

- 20,000 simultaneous database connections allowed for devices and users
- Web server protocols: HTTP and HTTPS
- Server may be on a network protected by a firewall and remotely accessed through VPN
- Remote access through VPN. Can also be an on-premise, public-facing website on the Internet
- Internet access to use on-cloud COLLABORATE Space Administrator (collaboratespace.net)
- Minimum broadband internet connection speed of 256Kbps (512 Kbps recommended)
- FTP Internet access to download firmware and software updates
- Disable FTP on multiple devices at once for better network security or enable it for firmware and configuration transference
- UDP and TCP audio device packet data on ports 3602, 3601, and 4912
- UDP broadcast, UDP unicast and direct TCP connection via scanning, on multiple subnets
- SMTP email server access for notifications
- LDAP directory service access (ex. Active Directory)

PRODUCTS SUPPORTED

- CONVERGE® Pro 2 DSP Mixers and peripherals
- CONVERGE Huddle DSP Mixer and peripherals
- COLLABORATE Live video codecs
- COLLABORATE Space

INTERFACE

- Overview dashboard, user action histories, and settings
- Device lists for ClearOne Pro Audio and Video Collaboration products
- User Sign-In portal showing organization name
- Multi-user account management views for both CONVERGENCE and COLLABORATE Space
- User roles: Monitor (read-only access) and Administrator (full read/write access)
- Users control their own interfaces, notifications, and general information — settings saved with account
- Organization settings tab for Administrators
- COLLABORATE Space administration of phone calls, billing, settings, and licensing
- Provides support links for application About, Help (English only), and Updates
- Application menus and views support 12 languages: English, French, Italian, Spanish, German, Portuguese, Polish, Chinese Simplified, Korean, Japanese, Arabic, and Russian
- Installer supports 10 languages (the above except Chinese Simplified and Arabic)
- RESTful Web service API documented and updated

SECURITY

- Strong 256-bit encrypted password storage for users, devices, and external services
- OAuth2 access to COLLABORATE Space
- Password trial rate limiting
- Quality meters prevent weak passwords
- Thwarts various security-hacking attacks

PART NUMBER

- SWR-1000-002 CONVERGENCE Unified Network Management Platform

SALES AND INQUIRIES

Headquarters

5225 Wiley Post Way
Suite 500
Salt Lake City, UT 84116

US & Canada

Tel: +1.801.975.7200
Fax: +1.801.303.5711

International

Tel: +1.801.975.7200
global@clearone.com

Sales

Tel: +1.801.975.7200
sales@clearone.com

TechSupport

Tel: +1.801.974.3760
tech.support@clearone.com