

# ClearOne®

## CONSOLE AI Lite

Supported Products:

COLLABORATE® Versa Lite CT  
COLLABORATE® Versa Room CT



# Contents

1. Introduction .....	3
2. Install the CONSOLE AI Lite Software .....	3
3. Launching CONSOLE AI Lite .....	6
4. The CONSOLE AI Lite Interface .....	7
5. Setting Channel Properties .....	14
6. Glossary .....	19

# 1. Introduction

CONSOLE AI Lite is designed for optimal use with the Versa Lite CT and Versa Room CT systems. With Audio Intelligence™ and Auto Connect™, it allows for easy and quick configuration of the COLLABORATE Versa Lite CT and Room CT systems.

With AutoConnect™, CONSOLE AI Lite proactively searches for available devices, connects to them, and then allows you to manage their properties. No need for a “Device Discovery” step!

## COLLABORATE Versa Lite CT and Versa Room CT

Both systems use a patented USB audio-enabled Beamforming Ceiling Tile microphone (BMA CTH) to bring cost-effective professional conferencing audio to small and mid-sized meeting rooms. Built in AEC, noise cancellation and adaptive steering (think of it as smart switching) provide impeccable room coverage.

Add ClearOne’s CONVERGE Wall-Mount Bluetooth Expander to enable mobile devices to join the conference wirelessly.

### Related ClearOne Documents

The following related documents are available at the ClearOne website ([www.clearone.com](http://www.clearone.com)) in the Resource Library:

- [COLLABORATE Versa Lite CT Datasheet](#)
- [COLLABORATE Versa Room CT Datasheet](#)

# 2. Install the CONSOLE AI Lite Software

You can install the CONSOLE AI on any Windows 8 (or greater) PC that meets the following requirements:

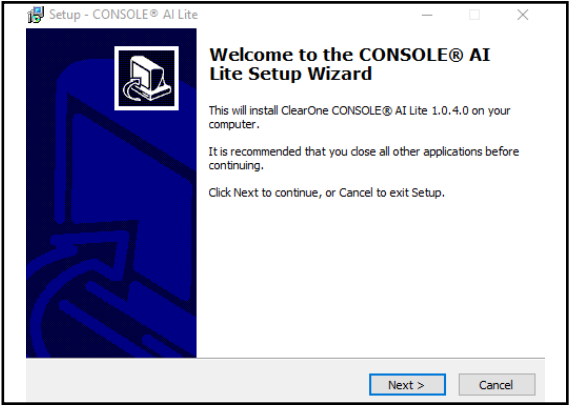
- 1 gigahertz (GHz) or faster 32-bit (x86) or 64-bit (x64) processor
- 1 gigabyte (GB) RAM (32-bit) or 2 GB RAM (64-bit)

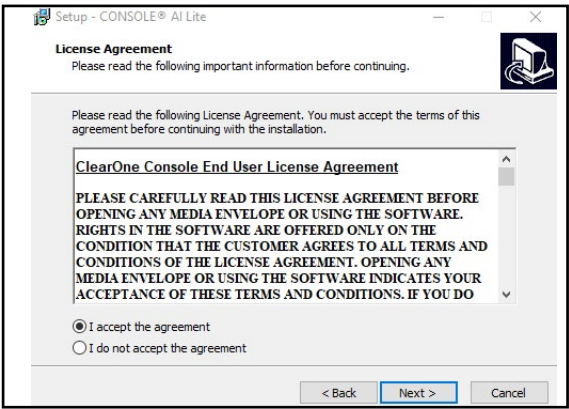
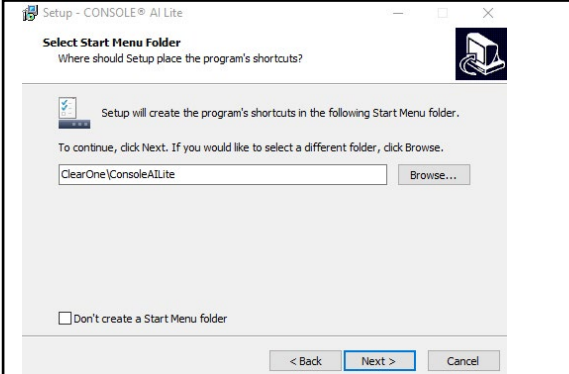
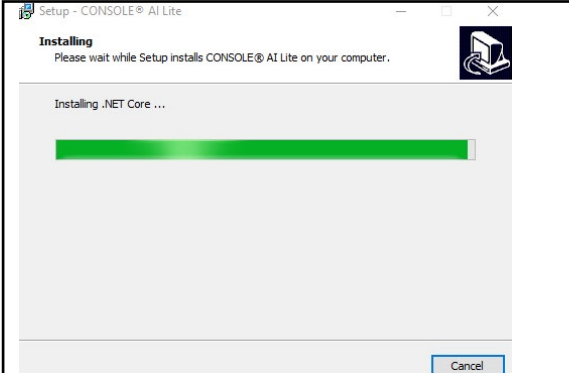
**Note:** As with many software applications, to install CONSOLE AI Lite, you must have administrative rights.

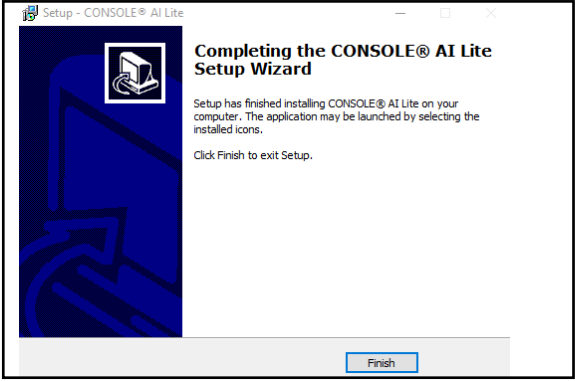
To install the CONSOLE AI Lite software, access the following web location:

<https://www.clearone.com/console-ai-lite-documents>

then tap or click the Download CONSOLE AI Lite link, and complete the following steps:

Step	Action
1	Run the installation application, Setup ConsoleAI_Lite. The Welcome screen appears: 

Step	Action	
2	<p>If you receive a User Account Control message from Windows that asks if you want to allow the installation program to make changes to your computer, <b>click Yes</b>.</p> <p>The CONSOLE AI Setup wizard begins, and the Setup License Agreement screen appears.</p>	
3	<p>Read the license agreement.</p>	
4	<p>If you agree to the terms, select the I accept the agreement option, and then click Next.</p> <p>The Setup program displays a screen that allows you to select a location for CONSOLE AI Lite's shortcuts.</p>	
5	<p>Use the browse ..... to select a folder, and then <b>click Next</b>.</p> <p>The setup program displays the Installing screen.</p>	
6	<p><b>Click Next.</b></p> <p>The successful install wizard screen appears:</p>	

Step	Action
7	<p><b>Click Finish.</b></p> <p>The program displays the following screen:</p> 
8	<p><b>Click Finish.</b></p> <p>Setup is complete.</p>

### 3. Launching CONSOLE AI Lite

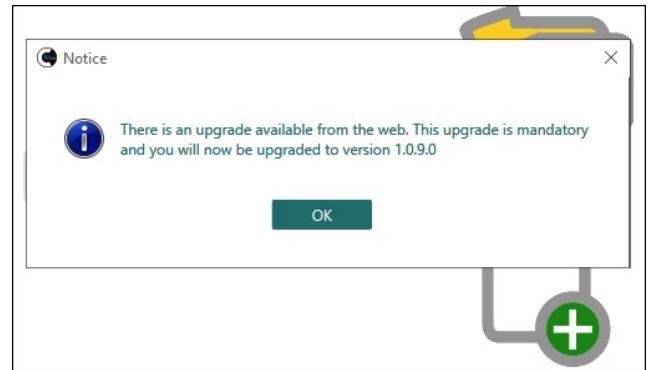
#### 3.1 Software Updates

At the launch of CONSOLE AI Lite, regardless if a device is connected or not, CONSOLE AI Lite compares your system’s version with the most recent available version.

If an updated version is available, the application displays, on the status bar, a button and text that notifies the user of the available update.

To download and install the updated version, **tap or click OK**.

If your computer system displays a popup window that asks if you want to allow CONSOLE AI Lite Setup to make changes to your computer, **tap or click Yes**.



CONSOLE AI Lite Setup asks if you are sure you want to completely remove CONSOLE AI Lite and it’s components. **Tap or click Yes**.

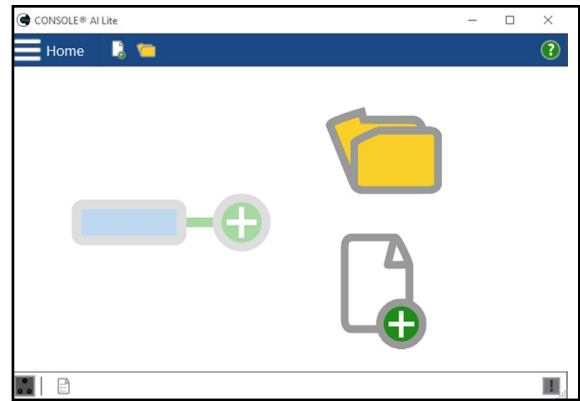
#### 3.2 Launching CONSOLE AI Lite with a Device Powered On and Connected

At launch, CONSOLE AI Lite determines if at least one device is powered on and connected.

If...	Then CONSOLE AI Lite...						
Only one device is connected to the PC	<ol style="list-style-type: none"> <li>1. Connects to the device, then</li> <li>2. Saves the device as the default device for future use of the app.</li> </ol> <p><b>Note:</b> This action overwrites a previously set default device.</p>						
More than one device is connected to the PC	Attempts to match the default device with devices it detects.						
	<table border="1"> <thead> <tr> <th>If CONSOLE AI Lite finds...</th> <th>Then it...</th> </tr> </thead> <tbody> <tr> <td>A match</td> <td>Automatically connects and leaves the default device unchanged.</td> </tr> <tr> <td>No Match</td> <td>Displays the home screen.</td> </tr> </tbody> </table>	If CONSOLE AI Lite finds...	Then it...	A match	Automatically connects and leaves the default device unchanged.	No Match	Displays the home screen.
	If CONSOLE AI Lite finds...	Then it...					
A match	Automatically connects and leaves the default device unchanged.						
No Match	Displays the home screen.						

### 3.3 Launching CONSOLE AI Lite with No Devices Powered On and Connected

When CONSOLE AI Lite launches with no ClearOne device powered on and connected, CONSOLE AI Lite displays the home screen:



When you then power on a device:

If you are...	Then CONSOLE AI Lite...
Creating or editing a project	Does not respond. You must close the file, then on the Home screen, tap or click Connect.
Not creating or editing a project file	Automatically connects to the devices.

## 4. The CONSOLE AI Lite Interface

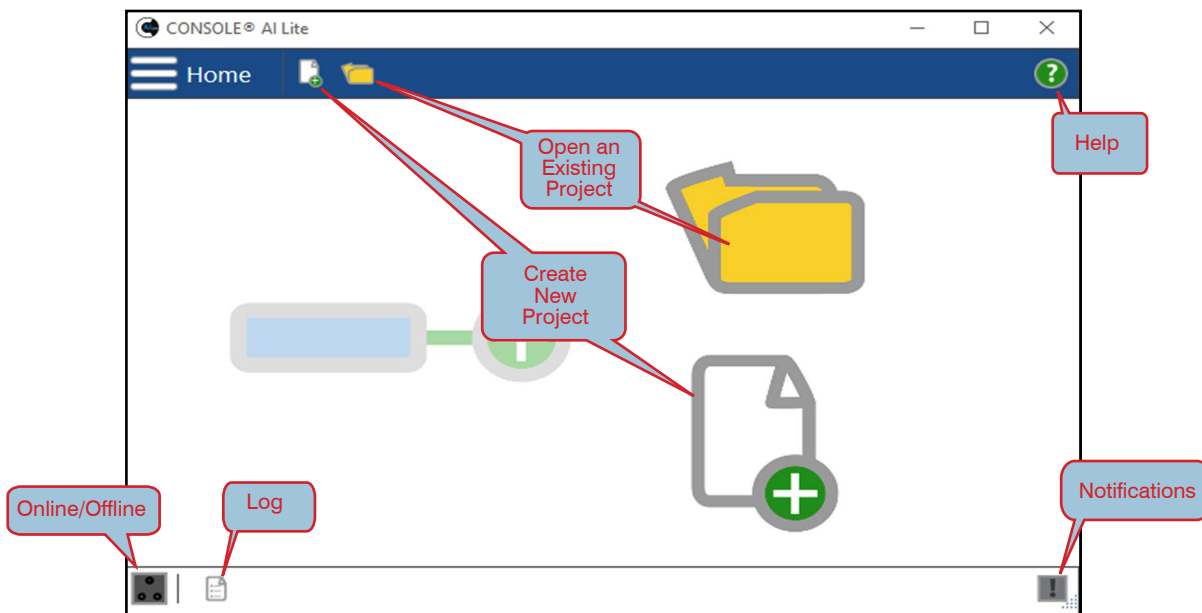
For quick access to the topics in this section, click the following links:

[4.1 Home Screen](#)

[4.2 Settings Screen](#)

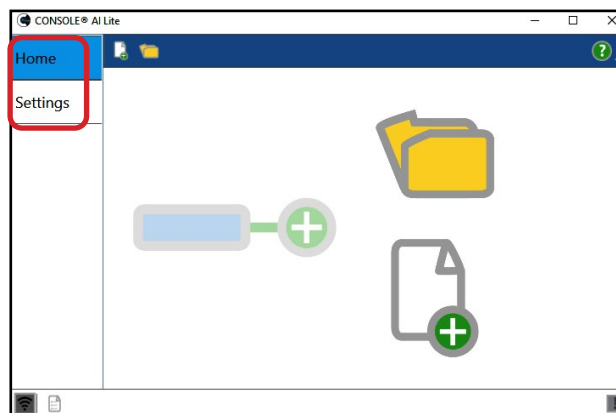
[4.3 Channel Properties Screen](#)

### 4.1 Home Screen



#### Home Screen Menu Options

From the Home screen, you can access the Settings screen. In the upper left, tap or click the menu icon.



#### About Screen

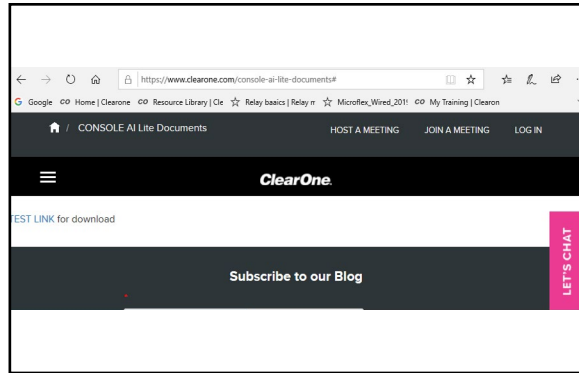
The About screen indicates the version of CONSOLE AI Lite you are using.





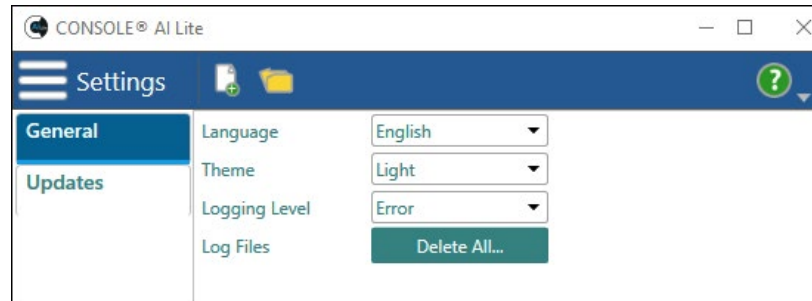
### Help Screen

The Help screen is a webpage on the ClearOne website: <https://www.clearone.com/console-ai-lite-documents>.

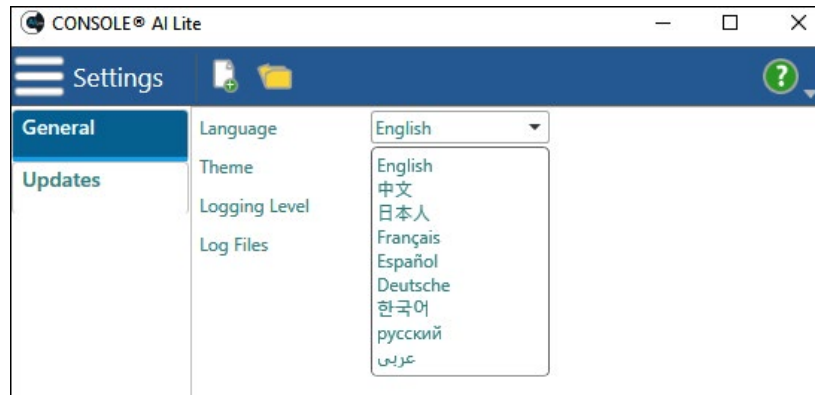


## 4.2 Settings Screen

### 4.2.1 General Screen



#### 4.2.1.1 Language

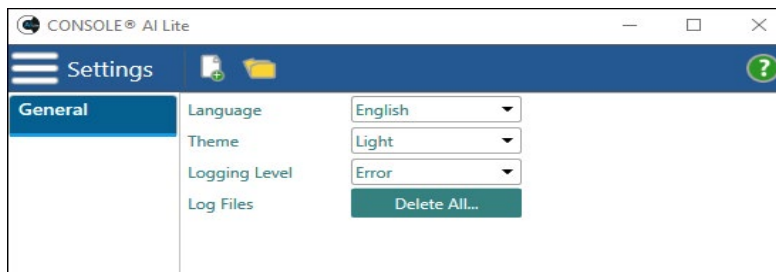


A change of language requires a restart of CONSOLE AI Lite.

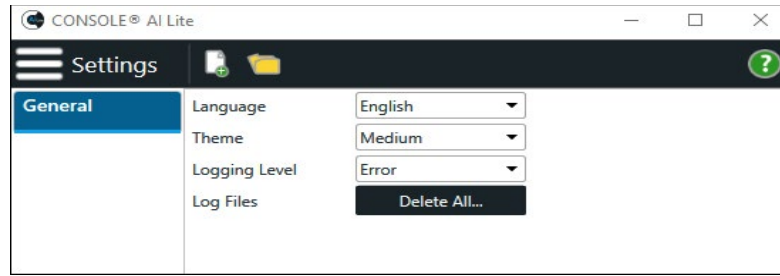


#### 4.2.1.2 Theme

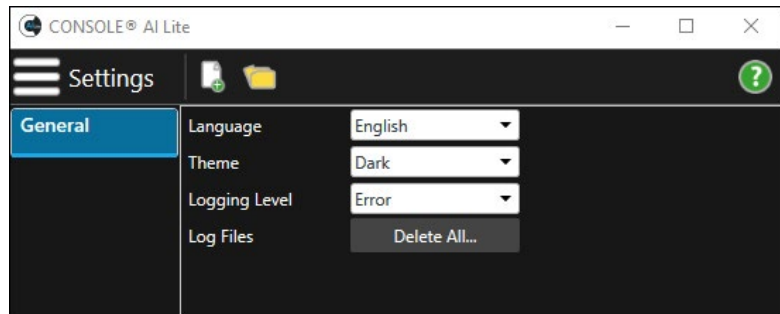
### Light



Medium



Dark



4.2.1.3 Logging Level

AI Lite includes the following hierarchal log levels:

**Error**

Full diagnostics. Often used by technical support to troubleshoot problems.

**Warning**

Items to watch for and investigate.

**Information**

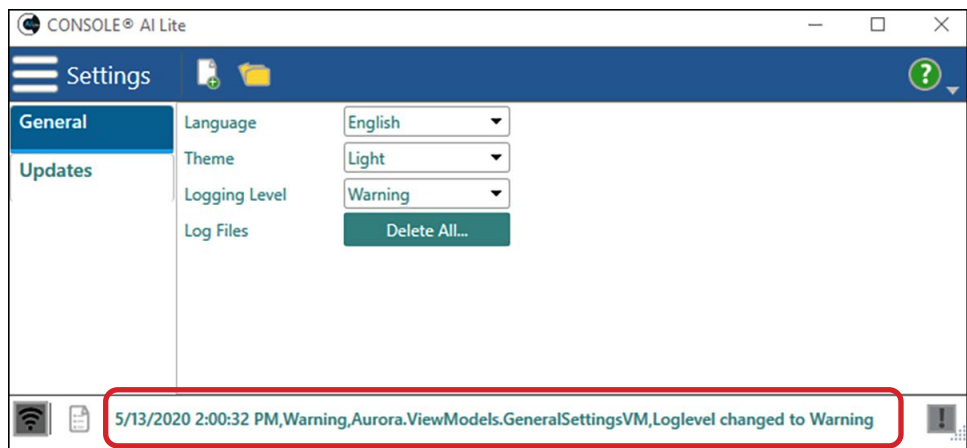
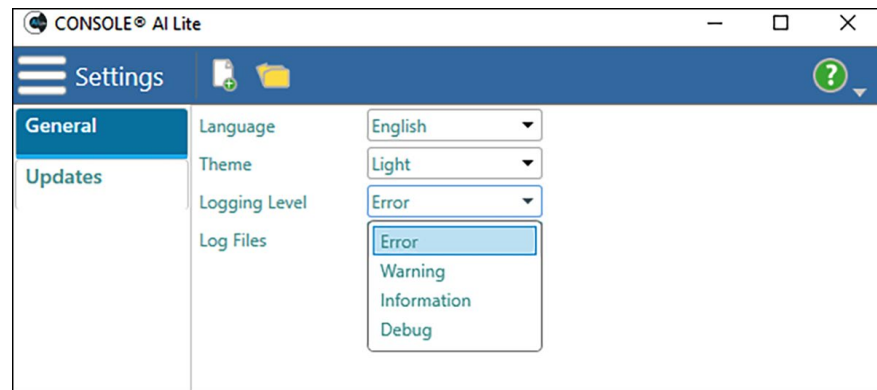
Completed processes, such as completed firmware updates

**Debug**

Other potentially helpful information such as log comments.

**Note:**

After you change the Logging Level, in the log area at the bottom of the screen, AI Lite displays a message that the log level was changed.

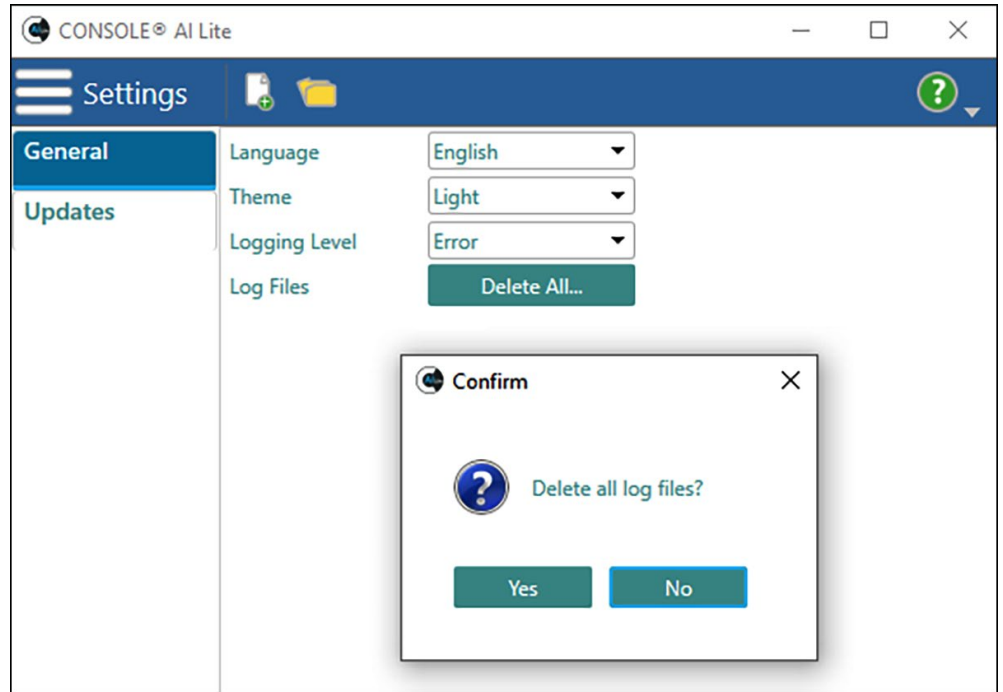


### 4.2.1.4 Log Files

If you call for assistance, ClearOne Technical Support may ask you to delete your log files.

This allows CONSOLE AI Lite to create new log files.

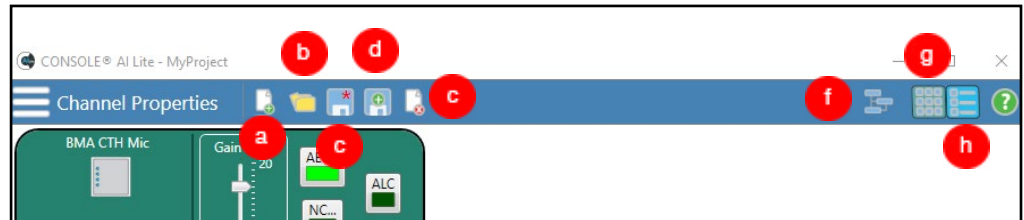
These new log files help the technical support representative diagnose your problem.



## 4.3 Channel Properties

The Channel Properties menu bar provides the following functions:

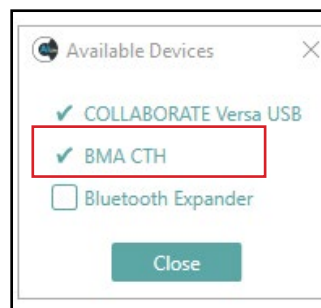
- a. Create new project...
- b. Open existing project...
- c. Save
- d. Save As...
- e. Close Project
- f. Available Devices
- g. Grid Layout
- h. List Layout



### 4.3.1 Available Devices

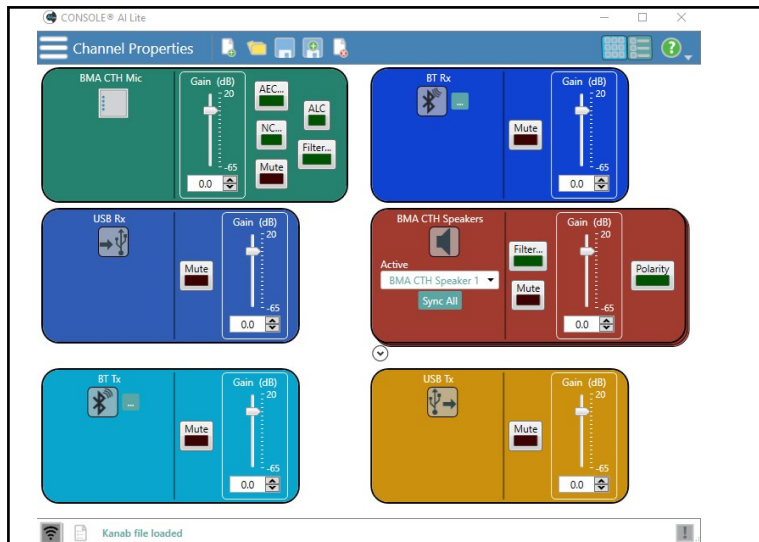
To view available devices, tap or click the Available Devices icon (f).

To add a Bluetooth Expander and view Bluetooth Receive and Transmit channels, tap or click the Bluetooth Expander checkbox.



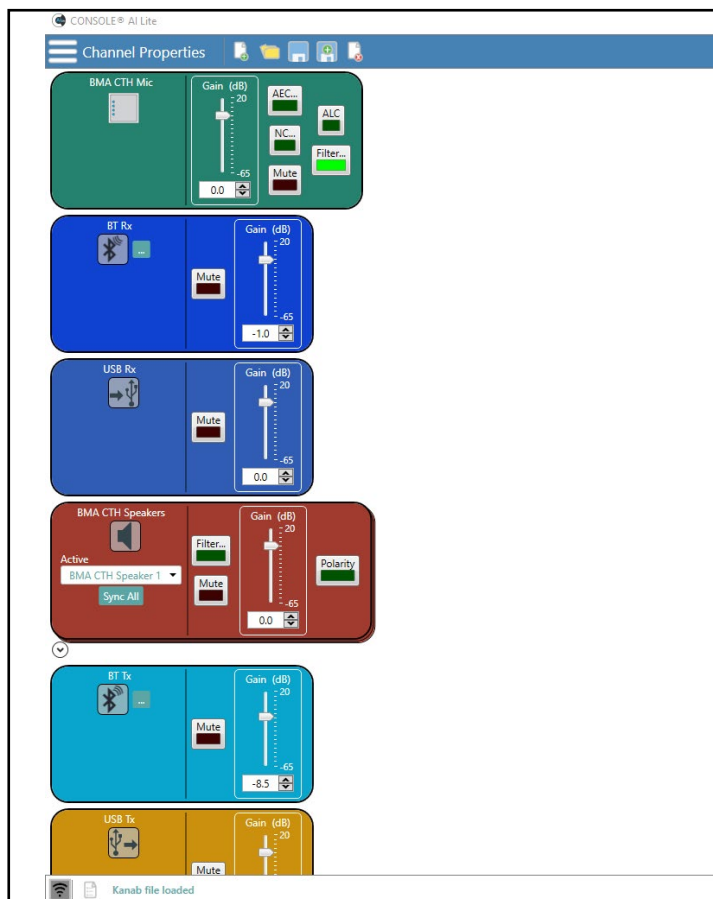
### 4.3.2 Grid Layout

To select the Grid layout, tap or click the Grid layout icon (g).



### 4.3.3 List Layout

To select the List layout, tap or click the List layout icon (h).



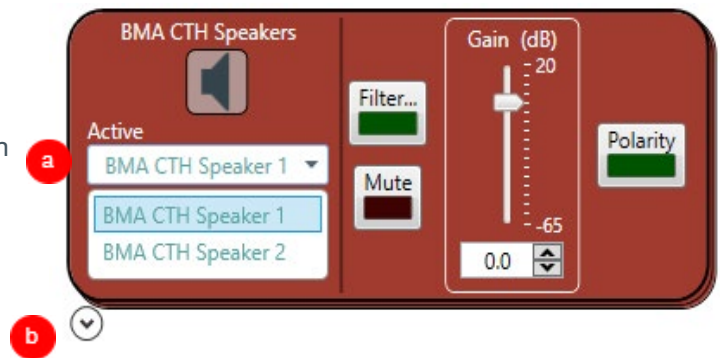
### 4.3.3 Speaker Views

CONSOLE AI Lite provides two ways to view the speakers in your system - Tile and Vertically Arranged.

#### Tile

By default, speaker 1 is in front of speaker 2.

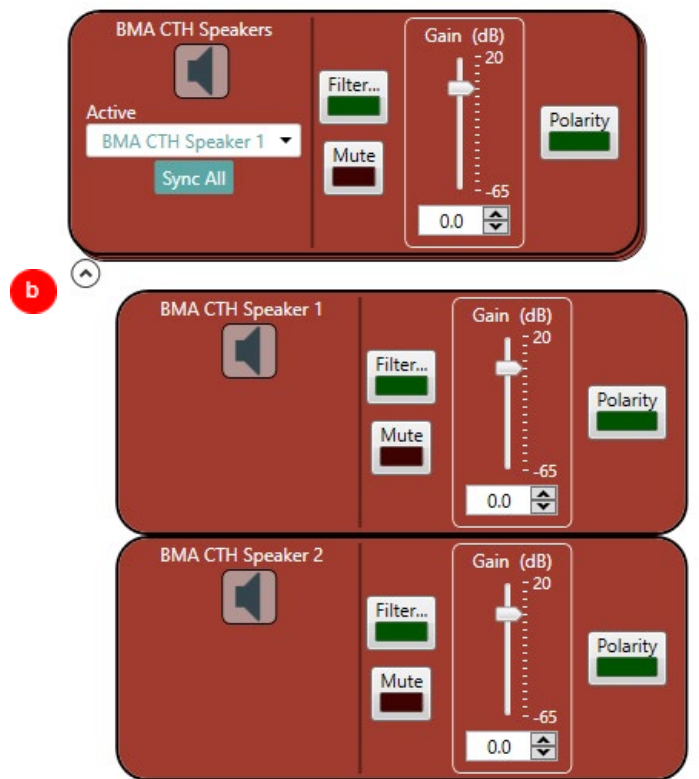
To change which speaker is on top, in the Active dropdown (a), select which speaker you want to view.



#### Vertically Arranged

To view both speakers, in the lower left, tap or click the expand/contract arrow (b).

To return to the tile view, tap or click the arrow again.



## 5. Setting Channel Properties

For quick access to the topics in this section, click the following links:

### [5.1 BMA CTH](#)

[5.1.1 Gain Setting](#)

[5.1.2 Beam Pattern and LED Settings](#)

[5.1.3 AEC and NLP](#)

[5.1.4 Noise Cancellation](#)

[5.1.5 Microphone and Speaker Filters](#)

[5.1.6 Automatic Level Control \(ALC\)](#)

### [5.2 Bluetooth](#)

[5.2.1 Bluetooth Receive](#)

[5.2.2 Bluetooth Transmit](#)

### [5.3 USB](#)

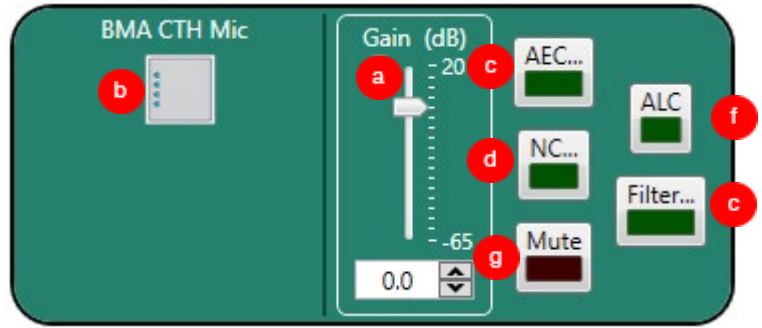
[5.3.1 USB Receive](#)

[5.3.2 USB Transmit](#)

### 5.1 BMA CTH

The following settings are available for the BMA CTH Mic:

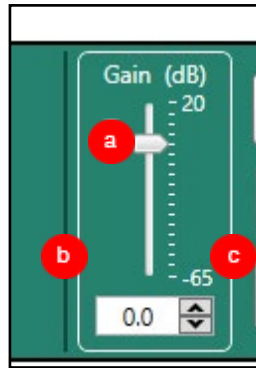
- a. Gain
- b. Beam Pattern and LEDs
- c. AEC (Acoustic Echo Cancellation) and NLP (Non-Linear Processing)
- d. NC (Noise Cancellation)
- e. Filters
- f. ALC (Automatic Level Control)
- g. Mute. All Mute buttons are toggle on (red)/off (brown).



#### 5.1.1 Gain Setting

You can set the gain level in 3 ways:

- Drag the slider (a).
- Type a value in the text box (b).
- Click the incremter and decremter arrows beside the text box to set the value (c).



#### 5.1.2 Beam Pattern and LED Settings

To access the beam pattern and LEDs settings, tap and click the BMA CT icon (a)

Two beam patterns are available:

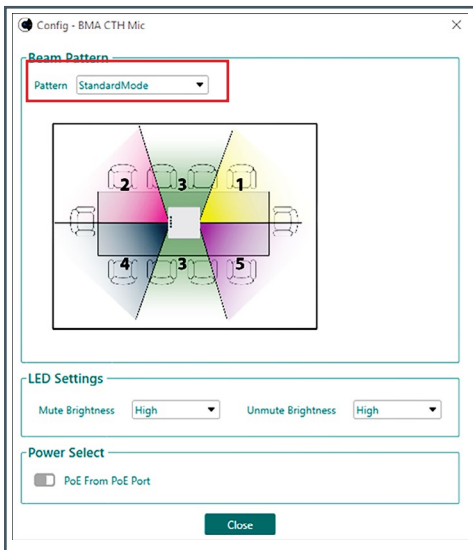
- Standard Mode
- Wide Angle Mode



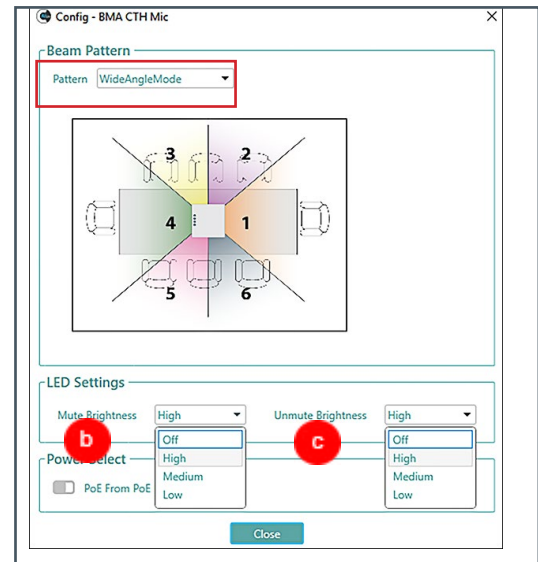
In each mode, four brightness levels for both Mute and Unmute are available (Off, High, Medium, Low).

The Wide Angle Mode image below displays the brightness options for Mute (b) and Unmute (c).

#### Standard Mode



#### Wide Angle Mode





### 5.1.3 AEC and NLP

AEC (Acoustic Echo Cancellation) reduces or removes acoustical echo from an input signal to improve audio clarity.

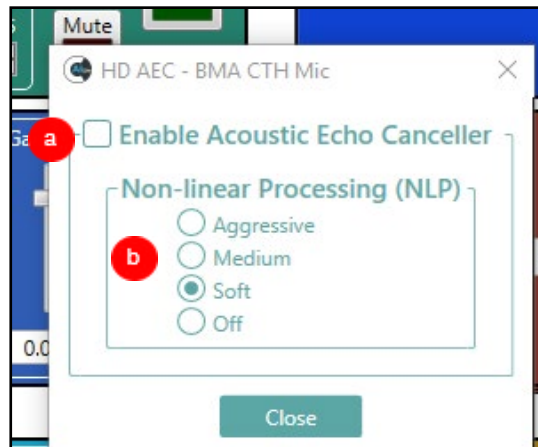
The BMA CTH uses the AEC function with the full bandwidth (20Hz to 22kHz) of the signal.

It uses a reference source based on the acoustic characteristics and dynamics of a specific room.

Non-linear Processing (NLP) increases the power of echo cancellation for challenging acoustical environments.

You can select the following:

- Whether or not you want to use AEC. Tap or click the checkbox (a) if you want to use AEC.
- The level of aggressiveness. Tap or click the appropriate radio button (b).



**Note:** Use NLP with care. The use of NLP has trade-offs, including audio suppression and half-duplex operation.

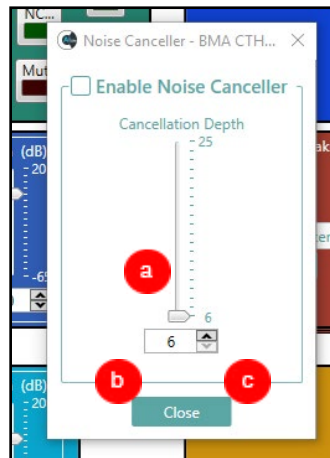
### 5.1.4 Noise Cancellation

Noise Cancellation removes ambient (background) noise from an input signal, with no noticeable degradation in signal quality.

To enable noise cancellation, tap or click the Enable Noise Canceller check box.

You can change the cancellation depth with any of the following methods:

- Drag the slider (a).
- Type a value in the text box (b).
- Tap or click the incrementer and decrementer arrows beside the text box to set the value (c).



### 5.1.5 Microphone and Speaker Filters

Filters enable you to shape the audio signals from microphone inputs channels and to speaker output channels for improved audio quality.

You can add up to **four filters** to a BMA CTH microphone or speaker channel. Available filter types include the following:

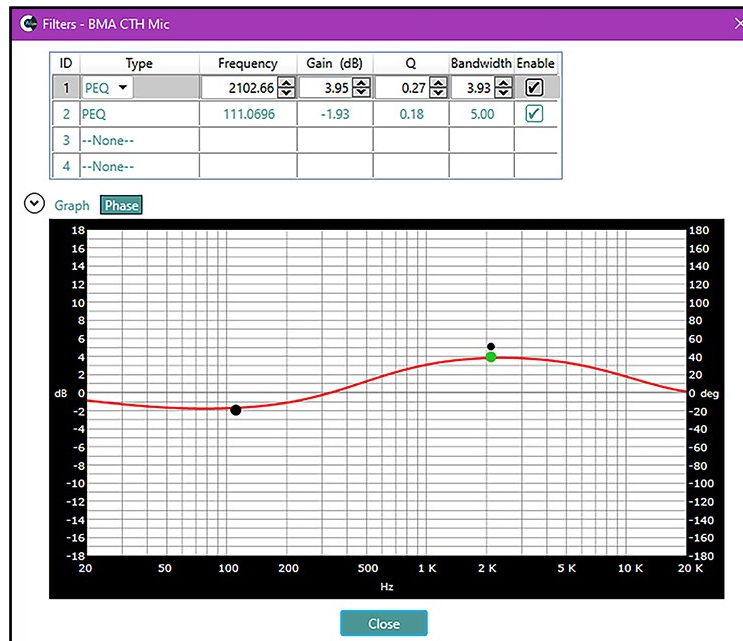
Filter Type	Description
All Pass	Frequency range is 20Hz to 20kHz. All pass changes the phase of the audio signal at the set frequency.
High Pass	Selectable frequency cutoff is 20Hz to 20kHz. Rolloff is 12dB/octave. Level is fixed at 0dB.
Low Pass	Selectable frequency cutoff is 20Hz to 20kHz. Rolloff is 12dB/octave. Level is fixed at 0dB.
Notch	Center frequency range is 20Hz to 20kHz. Bandwidth is from 0.05 to 5.00 octaves in 0.01 octave increments. Level is fixed at -80dB.
Parametric Equalizer (PEQ)	Center frequency range is 20Hz to 20kHz in 0.01Hz increments. Bandwidth is 0.05 to 5 octaves in 0.01 octave increments. Level range is -15 to +15dB in 0.5dB increments.



(Optional) If you do **not** want to use the filter default values, use the information in the following table to adjust:

Option	Description	Range	Default Value
Frequency	The center frequency for the filter you are configuring.	20Hz to 20kHz in 1Hz increments.	1kHz
Gain	The gain value for the filter you are configuring.	-15 to 15dB	0dB
Q	Quality factor. The ratio of the center frequency divided by the bandwidth. Q is the inverse of bandwidth, and the two parameters are linked. A change in the Q value changes the bandwidth value.	0.18 to 28.85	
Bandwidth	The difference between the upper and lower points of a filter's audio passband. Bandwidth is the inverse of Q, and the two parameters are linked. Hence changing the bandwidth value also changes the Q value.	0.05 to 5.00 octaves	

5.1.5.1 Example of a Filter

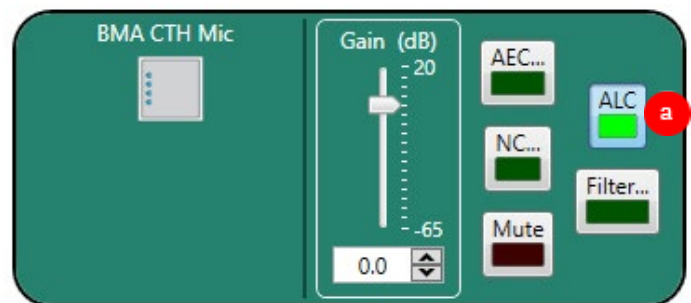


5.1.6 Automatic Level Control (ALC)

ALC keeps soft and loud local participants at a consistent level.

**Default setting: On (bright green)**

Tap or click the ALC button (a) to toggle ALC on and off (dark green).

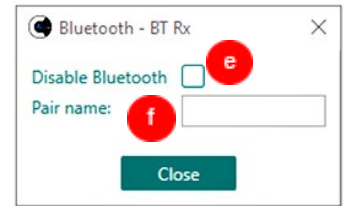


## 5.2 Bluetooth

### 5.2.1 Bluetooth Receive

You can set the gain with any of the following methods:

- Drag the slider (a).
- Type a value in the text box (b).
- Tap or click the incrementer and decrementer arrows beside the text box to set the value (c).



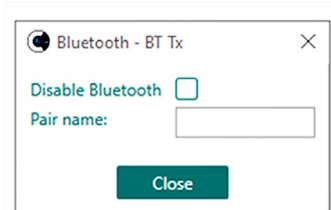
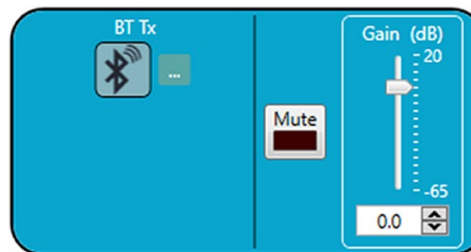
To pair with a mobile device, or disable Bluetooth, tap or click the Bluetooth ... symbol (d).

In the Bluetooth popup window, tap or click the check box (e) or, in the Pair name field (f), select the mobile device name.

The Mute button is toggle on (red)/off (brown).

### 5.2.2 Bluetooth Transmit

Instructions for Bluetooth Transmit settings are the same as those for Bluetooth Receive.



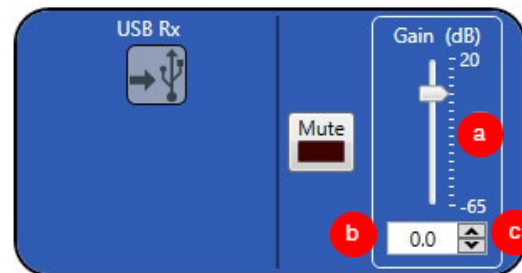
## 5.3 USB

### 5.3.1 USB Receive

You can set the gain with any of the following methods:

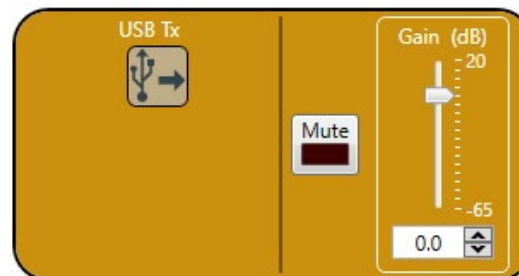
- Drag the slider (a).
- Type a value in the text box (b).
- Tap or click the incrementer and decrementer arrows beside the text box to set the value (c).

The Mute button is toggle on (red)/off (brown).



### 5.3.2 USB Transmit

Instructions for USB Transmit settings are the same as those for USB Receive.



## 6. Glossary

Term	Definition
Acoustic Echo Cancellation (AEC)	A process in which acoustical echo is removed from a signal. AEC can be used to re-move unwanted signals from mic audio if the unwanted acoustic signal is available separately as an electronic signal.
Attenuation	A reduction of signal amplitude.
Automatic Level Control (ALC)	ALC can be selected for Telco Receive and Mic/Line Input AEC channels. ALC keeps soft and loud telephone participants at a consistent level. ALC can be turned on or off in the Telco Receive and Mic/Line Input AEC Channel Properties. The default is on for both Telco Receive and Mic/Line Inputs.
Filter	<p>A device that passes and blocks audio signals based on user-definable requirements of the system. PEQ (Parametric Equalizer).</p> <p>A multi-band variable equalizer with control of gain, center frequency, and bandwidth. A properly configured PEQ enables Con-verge Pro devices to offset speaker anomalies and room acoustic imaging deficiencies.</p> <p>Center frequency range is 20Hz to 20kHz in 0.01Hz increments. Bandwidth is 0.05 to 5 octaves in 0.01 octave increments. Level range is -15 to +15dB in 0.5dB increments.</p>
Noise Cancellation (NC)	A process which removes ambient noise from a signal.
Polarity	Polarity in electrical terms refers to the positive or negative conductors within a dc circuit, or to the Line and Neutral conductor within an ac circuit. Electrical polarity (positive and negative) is the direction of current flow in an electrical circuit.
Project File	Project Files allow you to store configuration settings for Versa Lite configuration, including Inputs, and Outputs for a specific application or venue. Project files also pro-vide Console with the necessary information to communicate with project hardware using your PC.
Quality Factor	It is the ratio of the center frequency divided by the bandwidth. Q reflects an inverse relationship to the bandwidth, and is adjustable from 0.02:1 to 40:1.

## ClearOne Contacts

### Headquarters

5225 Wiley Post Way  
Suite 500  
Salt Lake City, UT 84116

### US & Canada

**Tel:** 801.975.7200  
**Fax:** 801.303.5711

### International

**Tel:** +801.974.3621  
**e-mail:** [global@clearone.com](mailto:global@clearone.com)

### Sales

**Tel:** 801.975.7200  
**e-mail:** [sales@clearone.com](mailto:sales@clearone.com)

### Technical Support

**Tel:** 801.974.3760  
**e-mail:** [tech.support@clearone.com](mailto:tech.support@clearone.com)

© 2020 ClearOne, Inc.

Information in this document is subject to change without notice.

Document: QSG-0043-001 v1.0 June 2020