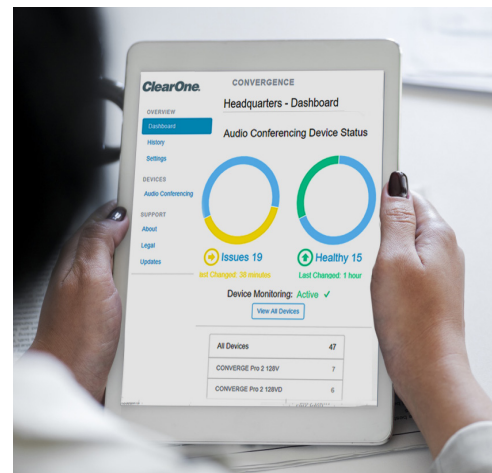
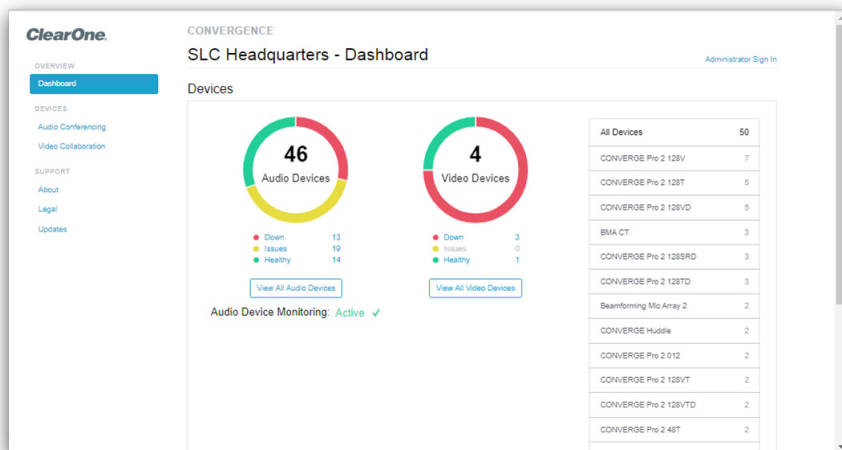


CONVERGENCE™ AV Network Manager



CONVERGENCE software is a unified AV network management platform to monitor, control, and audit ClearOne Pro audio and video products and services.

Access on Your Devices

Provides a powerful and elegant user interface on any browser from desktop to mobile.

- > Unlimited scalability designed to support organizations of any size.
- > Two levels of access — a secure administrator level for full access and a viewer level for monitoring.
- > Stay up-to-date with email notifications.
- > Search, sort, and filter to find what you need quickly.
- > Efficient batch firmware updates on multiple audio or video devices at once.
- > Download, back up, or restore project files simultaneously for multiple CONVERGE® Pro 2, Huddle devices, and their P-Link peripherals.
- > Provision CONVERGE Pro 2 VoIP lines and view VoIP registration status.
- > Configure and manage COLLABORATE® Live codecs and COLLABORATE Space user accounts.
- > Supports integration with third-party management systems via RESTful web service interface.
- > View the interface in one of 12 languages.

APPLICATIONS:

- Audio system management
- Video system management
- Web conferencing management
- Equipment auditing
- Multi-site support

WORKSPACES:

- Corporate campuses
- Higher-education campuses
- Large government deployments
- Multi-site complexes



Information At Your Fingertips

Download device logs and reports for devices, users, histories, and calls.

Great Ideas Need to be Heard and Seen!™

CONVERGENCE™ AV Network Manager

PLATFORM

- HTML browsers supported (desktop to mobile): Firefox, Chrome, Edge, Safari, Internet Explorer
- Server installer supports Windows 7, 8, and 10 (64-bit), Windows Server 2012 R2 and above
- Integrates with on-cloud or on-premise COLLABORATE® Space Administrator

MINIMUM HARDWARE REQUIREMENTS

- Approximate download size: 260MB
- Disk space: 2.1GB free
- Processor: 1GHz (large AV systems may require faster and multiple cores)
- RAM: 1GB free (to serve up to 10,000 devices)

COMMUNICATIONS

- Web server protocols: HTTP and HTTPS
- Server machine is meant to be on a network protected by a firewall
- Remote access through VPN
- Internet access to use on-cloud COLLABORATE Space Administrator (collaboratespace.net)
- Minimum broadband internet connection speed of 256Kbps (512 Kbps recommended)
- FTP Internet access to download firmware/software updates
- FTP firmware update transference to devices
- UDP and TCP audio device packet data on ports 3602, 3601, and 4912
- UDP broadcast, UDP unicast and direct TCP connection via scanning, on multiple subnets

PRODUCTS SUPPORTED

- CONVERGE® Pro 2 DSP Mixers and associated peripheral devices
- CONVERGE Huddle DSP Mixer and associated peripheral devices
- COLLABORATE Live video codecs
- COLLABORATE Space

INTERFACE

- Application menus and views support 12 languages: English, French, Italian, Spanish, German, Portuguese, Polish, Chinese Simplified, Korean, Japanese, Arabic, and Russian
- Overview dashboard, user action histories, and settings
- Device lists for ClearOne Pro Audio and Video Collaboration products
- COLLABORATE Space administration of users, phone calls, billing, settings, and licensing
- Provides support links for application About, Help (English only), and Updates
- Documented RESTful Web service API
- Installer supports 10 languages (the above except Chinese Simplified and Arabic)

PART NUMBER

- SWR-1000-002 CONVERGENCE Unified Network Management Platform

SALES AND INQUIRIES

Headquarters

5225 Wiley Post Way
Suite 500
Salt Lake City, UT 84116

US & Canada

Tel: +1.801.975.7200
Fax: +1.801.303.5711

International

Tel: +1.801.975.7200
global@clearone.com

Sales

Tel: +1.801.975.7200
sales@clearone.com

TechSupport

Tel: +1.801.974.3760
tech.support@clearone.com

Other product names and logos may be registered trademarks of their respective owners who do not necessarily endorse ClearOne or ClearOne's products. All rights reserved. Information in this document subject to change without notice. DST-0154-001 Rev1.3 20200311 ©2020 ClearOne.