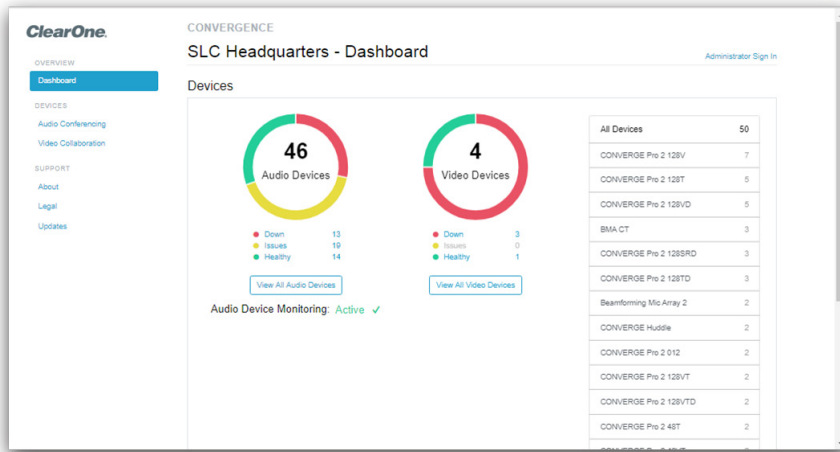


CONVERGENCE™ AV Network Manager



CONVERGENCE software is a unified AV network management platform to monitor, control, and audit ClearOne Pro audio and video products and services.

Remote Access

Remote real-time system access provides at-a-glance and all-inclusive dashboard views.

- > Unlimited scalability designed to support organizations of any size.
- > Two levels of access — a secure administrator level for full access and a viewer level for monitoring.
- > Provides a powerful and elegant user interface on any browser from desktop to mobile.
- > Cross-platform server runs on Windows and Linux OS for seamless IT integration.
- > Stay up to date with email notifications.
- > Search, sort, and filter to find what you need quickly.
- > Efficient batch firmware updates on multiple audio or video devices at once.
- > Download project files from multiple CONVERGE® Pro 2 and Huddle devices for convenient archiving.
- > Provision CONVERGE Pro 2 VoIP lines and view VoIP registration status.
- > Supports integration with third-party management systems via RESTful web service interface.

APPLICATIONS:

- Audio system management
- Video system management
- Web conferencing management
- Equipment auditing
- Multi-site support

WORKSPACES:

- Corporate campuses
- Higher-education campuses
- Large government deployments
- Multi-site complexes



Easy Conferencing Configuration

ClearOne's COLLABORATE® Live codecs and cloud-based COLLABORATE Space application can be easily configured and managed.

Great Ideas Need to be Heard and Seen!™

CONVERGENCE™ AV Network Manager

PLATFORM

- Web server, database, and application are 100% pure Java (8 and above)
- Windows and Linux/UNIX installers
- Supports Windows 7, 8, and 10 (64-bit), Windows Server 2012 R2 and above
- Integrates with on-cloud or on-premise COLLABORATE® Space Administrator

WEB BROWSERS

- HTML browsers supported (desktop to mobile): Firefox, Chrome, Edge, Safari, Internet Explorer

MINIMUM HARDWARE REQUIREMENT

- Approximate download size: 260MB
- Disk space: 2.1GB free
- Processor: 1GHz (large AV systems may require faster and multiple cores)
- RAM: 1GB free (to serve up to 10,000 devices)

COMMUNICATIONS

- Web server protocols: HTTP and HTTPS
- Server is designed to be installed on a network protected by a firewall
- Remote access through VPN
- Internet access is required to use on-cloud COLLABORATE® Space Administrator (collaboratespace.net)
- Minimum broadband internet connection speed of 256Kbps (512 Kbps recommended)
- FTP Internet access to download firmware/software updates
- FTP required to support firmware updates to devices
- UDP and TCP audio device packet data on ports 3602, 3601, and 4912
- UDP data sent by broadcast for audio devices

PRODUCTS SUPPORTED

- CONVERGE® Pro 2 DSP Mixers and associated peripheral devices
- CONVERGE Huddle DSP Mixer and associated peripheral devices
- COLLABORATE Live video codecs
- COLLABORATE Space

PART NUMBER

- SWR-1000-002 CONVERGENCE Unified Network Management Platform

SALES AND INQUIRIES

Headquarters

5225 Wiley Post Way
Suite 500
Salt Lake City, UT 84116

US & Canada

Tel: +1.801.975.7200
Fax: +1.801.303.5711

International

Tel: +1.801.975.7200
global@clearone.com

Sales

Tel: +1.801.975.7200
sales@clearone.com

TechSupport

Tel: +1.801.974.3760
tech.support@clearone.com