

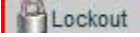


DigiLinX™ Application Note

Using the Control Point Lockout Functionality in DigiLinX

The Control Point lock out functionality has been added to the DigiLinX system as of Dealer Setup version 2.4. The functionality is designed to provide a basic access control mechanism for DigiLinX. This system is not a full fledged security system, rather it provides a single code for each control point, such as a TouchLinX or Browser based user interface. This document will walk through how to setup the Control Point Lockout functionality in Dealer Setup.

Setting a PIN for a Control Point

Once you have added all you devices and rooms click the lockout icon  in Dealer Setup. You will see a screen as shown in Figure 1.

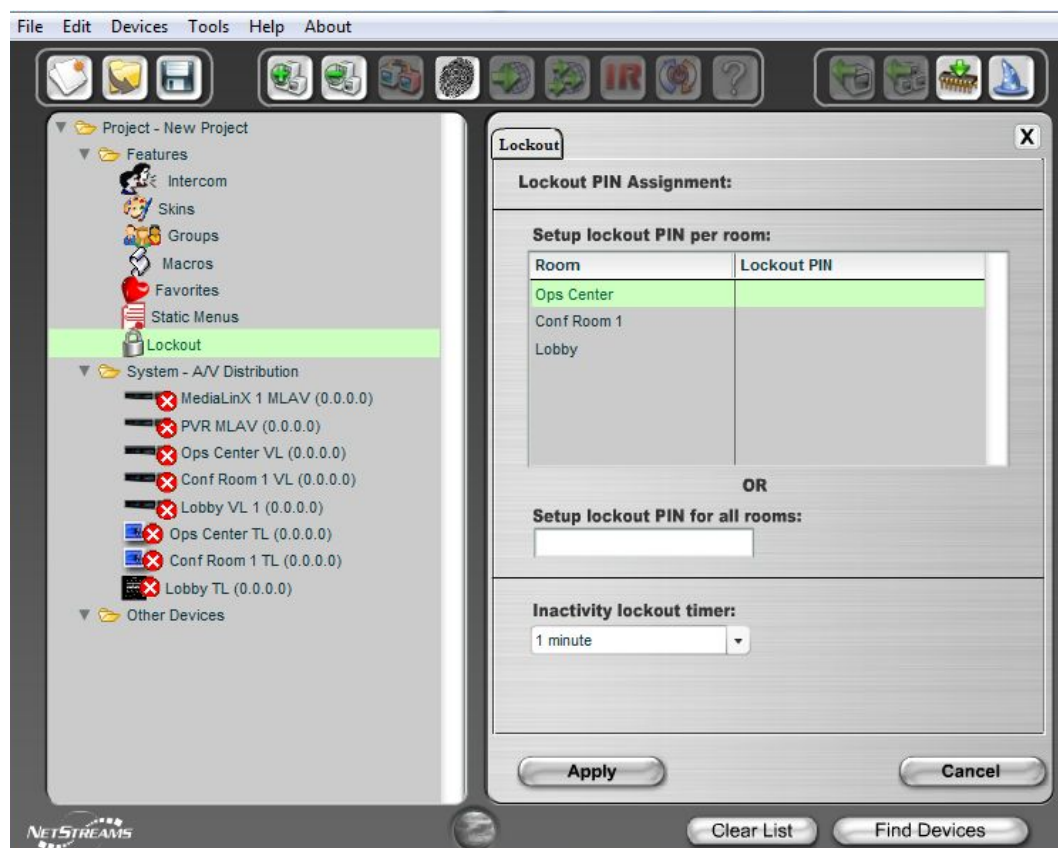


Figure 1: Lockout page in Dealer Setup

To enter a lockout pin for all the rooms, simply type a code in the box labeled 'Setup lockout PIN for all rooms:' as shown in Figure 2. Click Apply after entering the PIN and the PIN will be copied to all the rooms listed.



DigiLinX™ Application Note

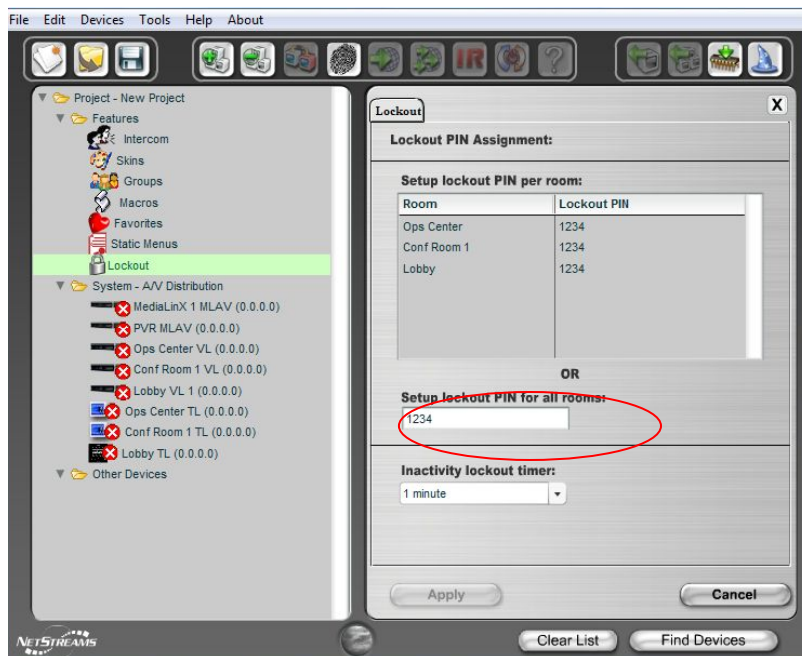


Figure 2: Set lockout PIN for all rooms

To enter a lock out pin for just one room, click the column 'Lockout PIN' in the table as shown in Figure 3, enter your PIN and either click Apply or go to the next room which you wish to enter a PIN for.

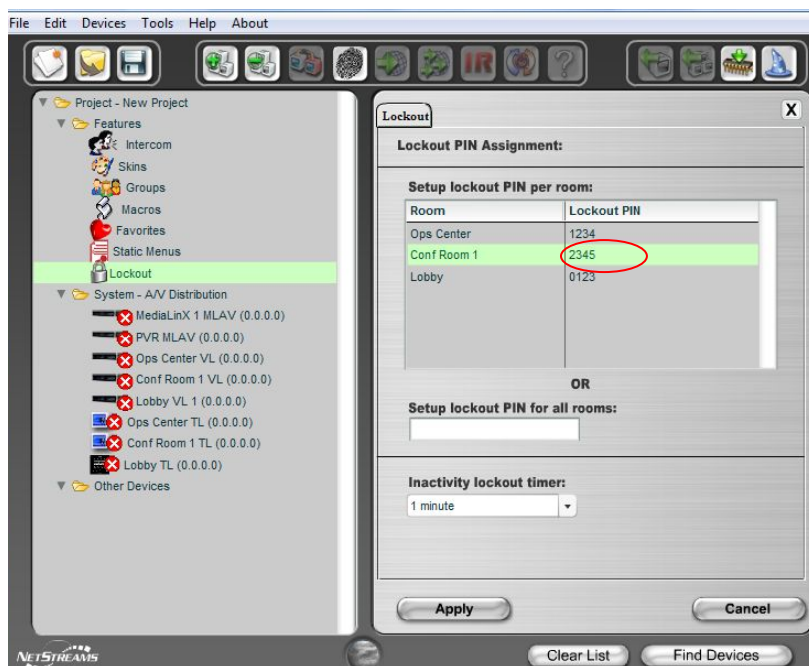


Figure 3: Set lockout PIN for a single room

If you leave a lockout pin blank then that room will not lock and will be accessible always.



DigiLinX™ Application Note

Unlocking a locked Control Point



Figure 4: Touchscreen showing locked room

If you have a Touchscreen in the locked room, (TL380, TL430, TL700) then when someone activates a locked touchscreen the GUI will look like Figure 4. The user must enter the PIN and click Enter to unlock the touchscreen. As the PIN is entered, the digits will not be displayed, only '*' for each digit will be shown on the TouchLinX. (see Figure 5)

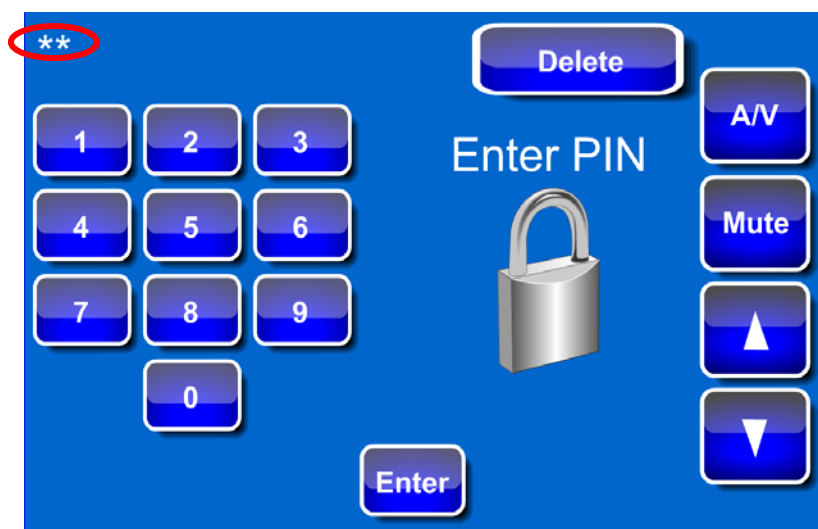


Figure 5: GUI with digits being entered

If you DO NOT have a touchscreen in the room and have either a TouchPad (TLA250) or KeyLinX (KL201) the room will still be able to be locked in the Virtual Control software but NOT from the physical keypad. This means that an end user could walk up to the TLA250 and control the room but they could not access it from the Virtual Control software.

If you unlock a touchscreen, then navigate to control another room which is locked the system will not stop you from controlling that room. The lockout is for the physical device or its virtual controller not for the actual room.



DigiLinX™ Application Note

Locking a Control Point

A Control Point will lock either after it times out or if the user clicks the Lock icon shown on the GUI (see Figure 6).



Figure 6: Main GUI with Lock icon

For further questions on the Control Point Lockout functionality please go to www.netstreamsforums.com or contact support at support@netstreams.com.