

DIGILINX™ Application Note

Integrating *DigiLinX* with an IP Camera or IP Camera Digital Video Recorder (DVR)

DigiLinX supports the use of IP cameras and IP cameras with DVR capability. *DigiLinX* Dealer Setup provides built-in support for a wide selection of Panasonic® cameras and has the capability to support other brands as well. This application note will discuss the cameras integrated and tested with *DigiLinX*, explain how to configure a supported IP camera, provide tips on integrating other third party cameras, and provide information on *DigiLinX* support for IP cameras with DVR capability.

Cameras Tested with *DigiLinX*

DigiLinX has been integrated and tested with the following IP cameras:

- Panasonic KX-HCM280
- Panasonic KX-HCM250
- Panasonic KX-HCM11A
- Panasonic BL-C10
- Panasonic BL-C30A
- Panasonic BB-HCM371A
- Panasonic BB-HCM211A
- Panasonic BB-HCM381A.

Other types of IP Cameras can be used with *DigiLinX* that meet the requirements specified in the section titled "Integrating a non-Panasonic Third Party IP Camera" in this application note.

Using *DigiLinX* Dealer Setup to Add an IP Camera

Complete the following steps to add an IP Camera to a *DigiLinX* project:

1. Start *DigiLinX* Dealer Setup and open the project that you want to add an IP Camera into.
2. Click the **Add Device** button. The following screen appears:

The
IP-Based
Distributed
Entertainment
Company.

Products Included:

DigiLinX



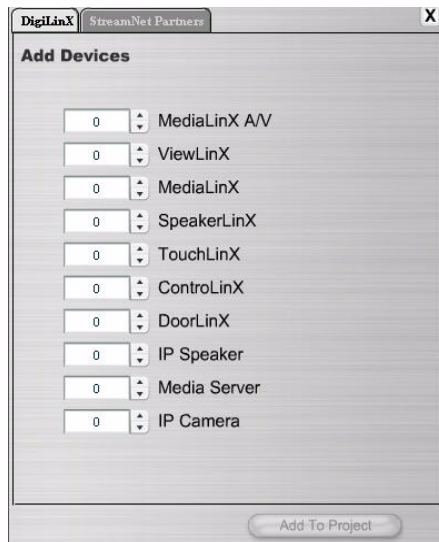


Figure 1 Add Device Screen in Dealer Setup

3. Using the up arrow key next to **IP Camera**, select the number of IP Cameras you want to add to the project.
4. Click the **Add to Project** button. *DigiLinX* Dealer Setup displays the Add Camera Information screen (Figure 2).

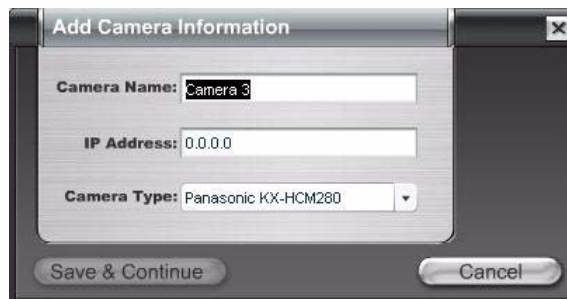


Figure 2 Add Camera Information screen

NOTE: Set the IP address of the camera in the camera's software before attempting to integrate it with *DigiLinX*.

5. Enter a name for the camera in the **Camera Name** field, the IP address of the camera in the **IP Address** field, and the camera type in the **Camera Type** field. If you are not selecting a Panasonic camera, select **Other** in the **Camera Type** field.
6. Click the **Save & Continue** button. If you selected a Panasonic camera, *DigiLinX* Dealer Setup displays a screen that shows the camera information you entered along with the Camera Image URL, default Camera Port (80), Control URLs for the Camera, and Camera Presets (Figure 3). Click **Apply** to save the camera settings.

If you did not select a Panasonic camera, proceed to the following section.

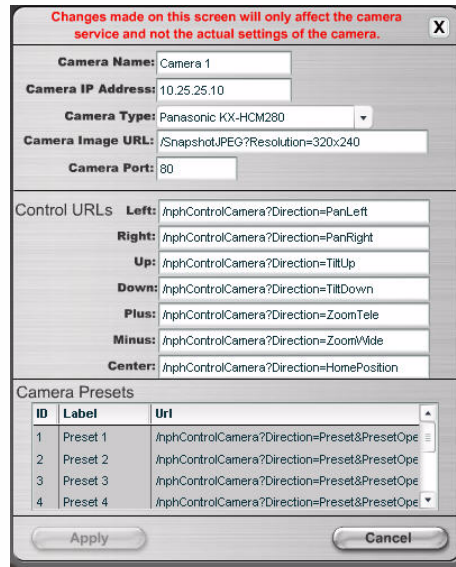


Figure 3 IP Camera Settings for a Panasonic Camera

Integrating a Non-Panasonic Third Party IP Camera with *DigiLinX*

Other cameras can be used with a *DigiLinX* system, but require more information from the installer. When you enter a camera type of **Other**, *DigiLinX* Dealer Setup displays the following screen.

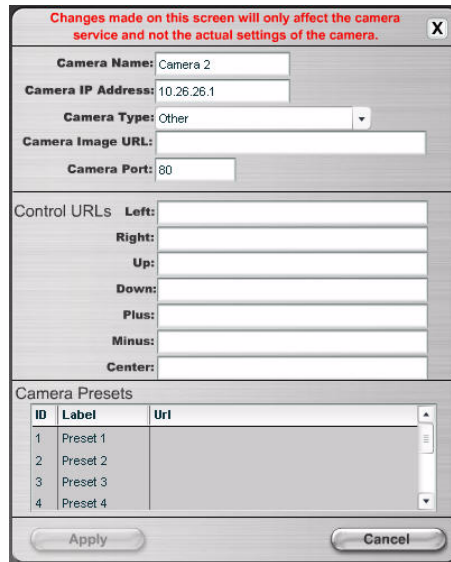


Figure 4 IP Camera Settings for a Non-Panasonic Third Party IP Camera

Before adding another type of camera, you should contact the camera manufacturer to find out if your camera meets the following requirements for integration with the *DigiLinX* system:

- The camera allows you to view and control **without** a user name and password.
- The camera provides access to the camera image and can be controlled (pan, tilt, zoom, etc.) using URL strings. For example, on a Panasonic camera, the string for the camera image is `http://10.1.1.1/SnapshotJPEG?Resolution=320x240` (where 10.1.1.1 is the IP address of the camera). An easy way to find the URL is to consult the camera's Application Programming Interface (API) documentation. For example, AXIS VAPIX cameras list their control URL strings in their API which can be found at: http://www.axis.com/techsup/cam_servers/dev/cam_http_api_2.htm.

On some cameras, you can also find information on the URL for the basic camera controls such as Left, Right, Up, Down, Plus (zoom out), Minus (zoom in), and Center by placing your cursor over the camera controls on the camera web browser user interface, and clicking the right mouse button. You enter the URL strings you find under **Control URLs** on the Camera Settings screen in *DigiLinX* Dealer Setup.

Limitations when Integrating an IP Camera DVR with *DigiLinX*

Many cameras include DVR features that are normally used with security systems. Some systems use a central server/DVR to control several cameras. While *DigiLinX* does not interface with the DVR portion of the camera, or system, it may be possible to use the IP camera as part of your *DigiLinX* system, as long as the camera meets the requirements listed in the previous section. You configure the IP camera DVR just like any other IP camera in the *DigiLinX* system.