

DIGILINX™ Application Note

DigiLinX Dealer Setup Design Rules Check Function

Introduction

The new *DigiLinX* Dealer Setup Design Rules Check is a diagnostic tool that checks your *DigiLinX* project file for accuracy before sending the configuration files to all *DigiLinX* devices in the system.

Design Rules is available with *DigiLinX* Dealer Setup version 1.42 or higher. More diagnostic tools continue to be added in future releases.

The following are some potential issues that Design Rules checks:

- Invalid Characters or Strings - includes characters (such as ~, #, \$, \, %) or strings (such as "Amp", "C", "Q") these characters are reserved for programming code.
- Duplicate Service Names - checks for one or more devices that have the same name.
- Camera Information - checks for duplicate or improper IP configuration.
- IP conflicts - checks for wrong IP addressing scheme or invalid subnet mask.

NOTE: Other checks are performed in addition to these, but this list includes the most common issues found in *DigiLinX* project files.

Running the Design Rules Check Function

To run the Design Rules Check function, complete the following steps:

1. Create a project file using the *DigiLinX* Dealer Setup Program.
2. With the project open, select **Tools>Design Rules Check**.
A popup window displays showing any errors in your project file (see Figure 1).

NOTE: This example shows a duplicate service name error and an IP addressing problem.

The
IP-Based
Distributed
Entertainment
Company.

Products Included:

**DigiLinX Dealer
Setup Program**



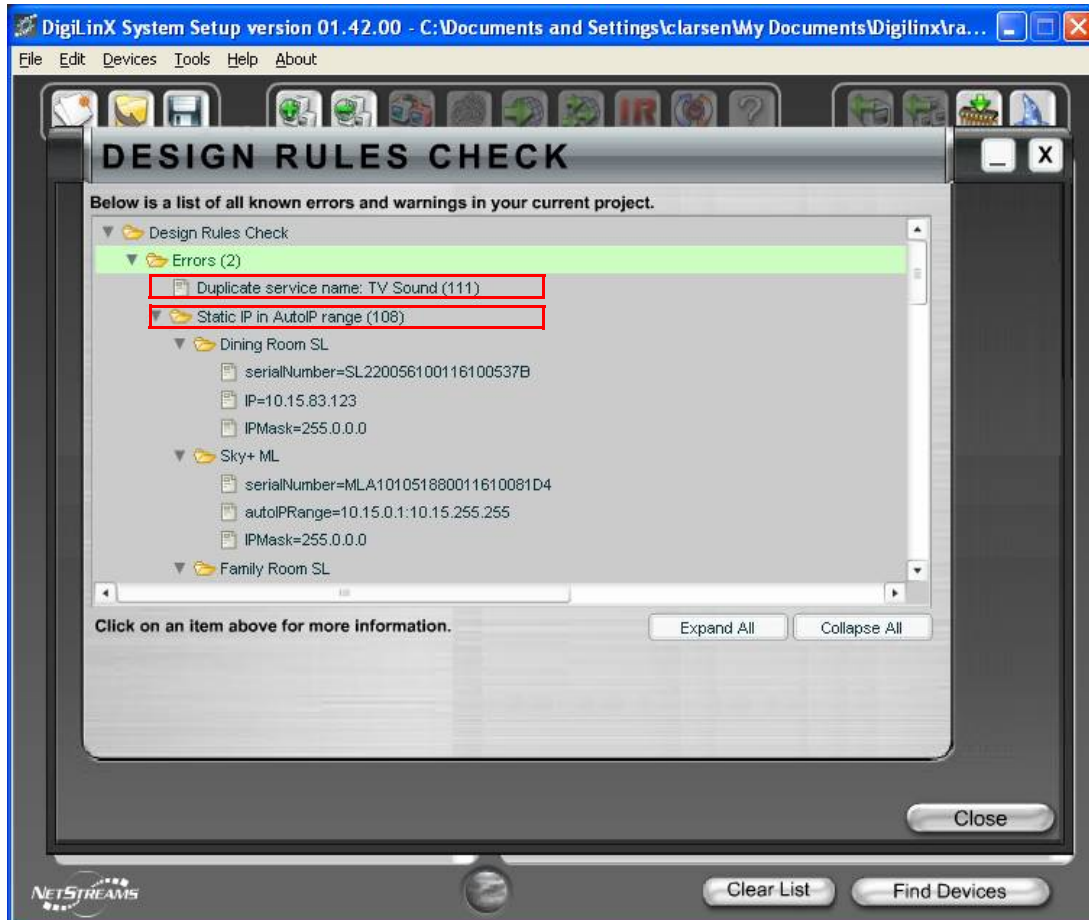


Figure 1 Design Rules Results Screen

3. Note and fix any issues.
4. Rerun the Design Rules Check function until you have cleared all errors.