

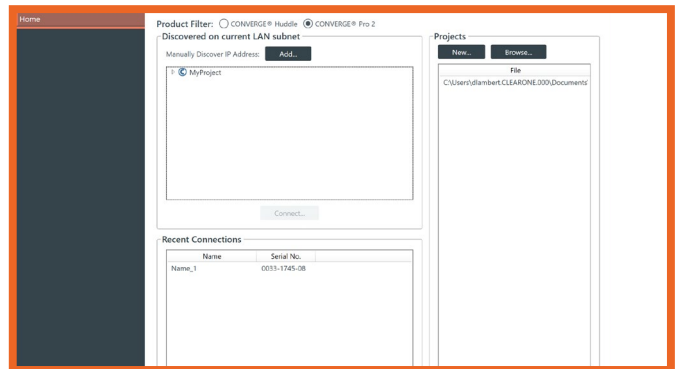
ClearOne Pro CONSOLE version 6.5 update information

VERSION 6.5 MAKES SIGNIFICANT CHANGES TO FILE SAVING AND PROJECT DEPLOYMENT FOR PRO CONSOLE SOFTWARE.

INFORMATION OVERVIEW

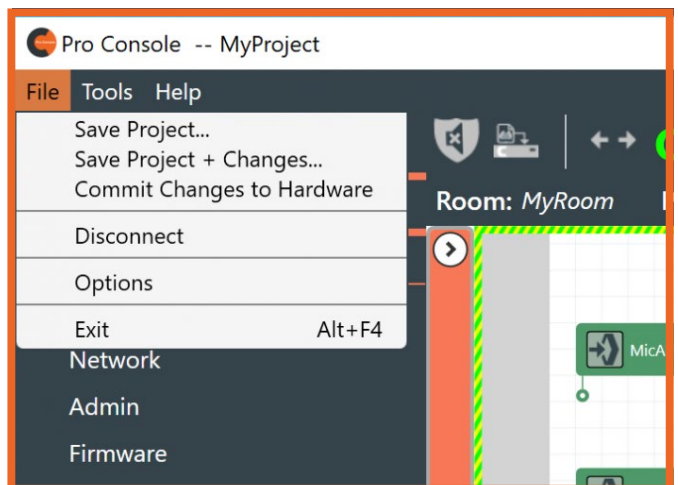
Going online

- + Click on discovered devices or recent connections
- + Click 'connect'
- + the software prompt asks for username and password
Default: username: clearone password: converge
- + The green border and green ONLINE indicates that you are connected to hardware



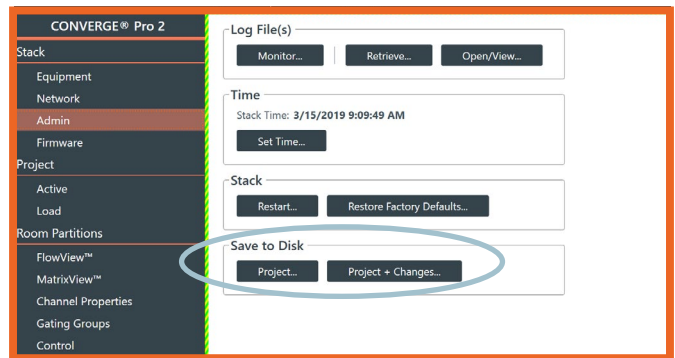
Project Management

- + **Save project** - Pulls the project from the CONVERGE Pro 2 and saves it onto your PC
- + **Save project + changes** - Pulls the project from the CONVERGE Pro 2 plus any live changes that have been made and saves it to your PC

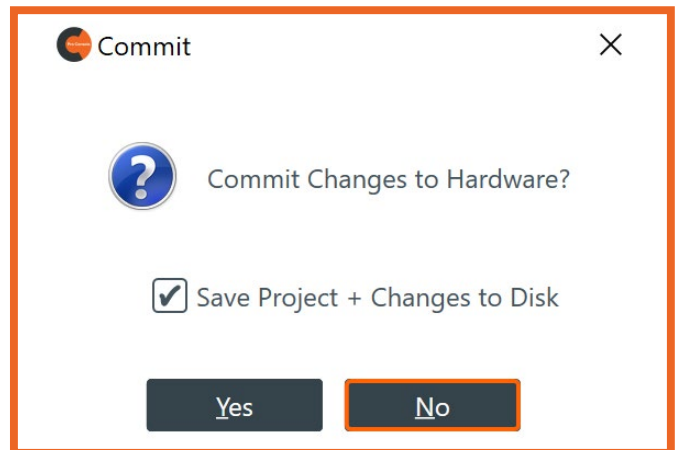


INFORMATION OVERVIEW

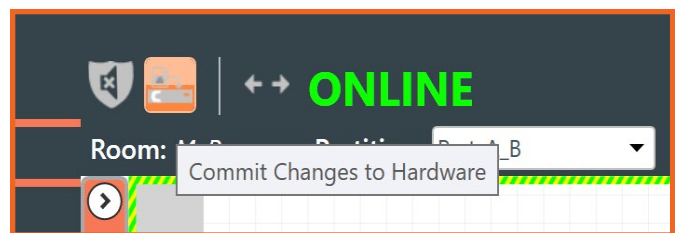
- + Save project options also available on admin layout



- + **Commit changes to hardware** - Stores all live changes into the last ran preset of each active partition



- + There is also a Commit changes to hardware button near top of window to commit current Project + Live values to the equipment stack

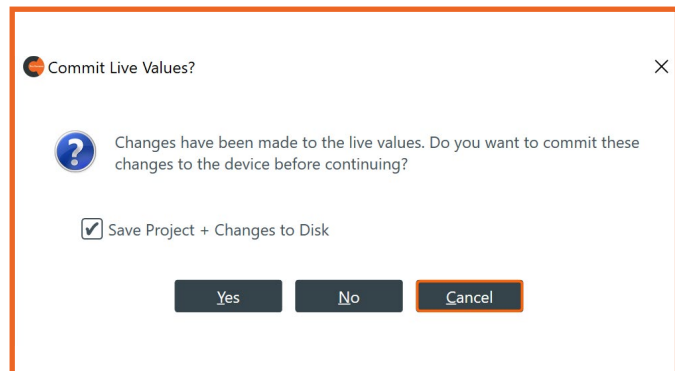


Live changes

- + When you go to the "Control mode" view it will ask you if you want to "Commit Changes to Hardware" if there are any live changes. While in Control Mode you can now run presets and macros without any more prompts until you go back into another screen and make additional live changes

Disconnecting

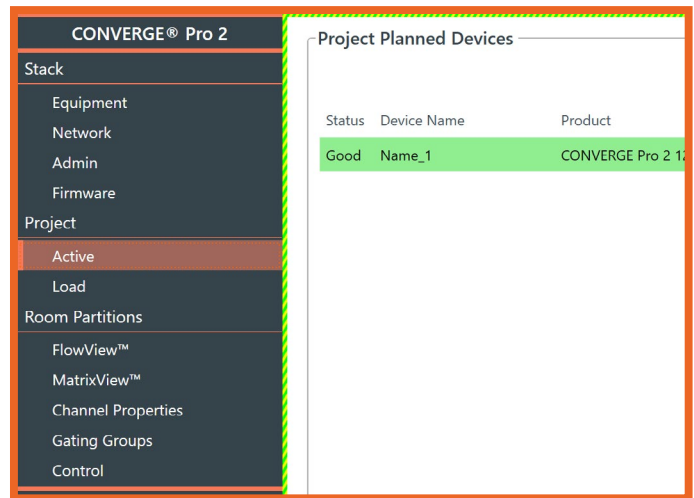
- + If you have made live changes while in Control Mode and hit disconnect, it will ask if you want to save before disconnecting



INFORMATION OVERVIEW

Stack area

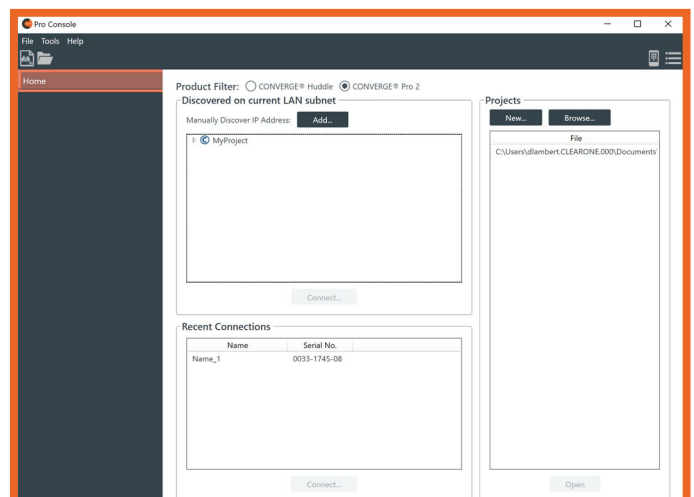
- + All actions can now be found on the Left Panel Navigation



Offline Mode

When offline you can do the following:

- + Open a project
- + Create a new project
- + Connect to units in ONLINE mode
- + View discovered devices and recent connections



Other changes

- + Top of screen now indicates 'last run preset'

