

## APPLICATION NOTE

**PRODUCTS SUPPORTED:**  
CONVERGE® Pro models: 880, 880T, 880TA, 840T, 8i,  
TH20, VH20, SR1212, SR1212A

CLEARONE DOCUMENT NTS-0020-001  
(REVISION 1.0) March, 2013

QUICK GUIDE TO UTILIZING SIMPLETESTER™  
TO VERIFY THE CONVERGE PRO SNMP

### OVERVIEW

The purpose of this document is to demonstrate testing SNMP of the CONVERGE Pro product line with third-party testing software from SimpleSoft.

CONVERGE Pro Systems	
880	TH20
880T	VH20
880TA	SR1212
840T	SR1212A
8i	

SimpleTester from SimpleSoft is a familiar testing platform for SNMP compatibility, so it is used as the engine to validate the CONVERGE Pro product lines. There are other test platforms available on the market, however they are not discussed in this document.

For actual SNMP management of the CONVERGE Pro, use an SNMP manager application, not SimpleTester.

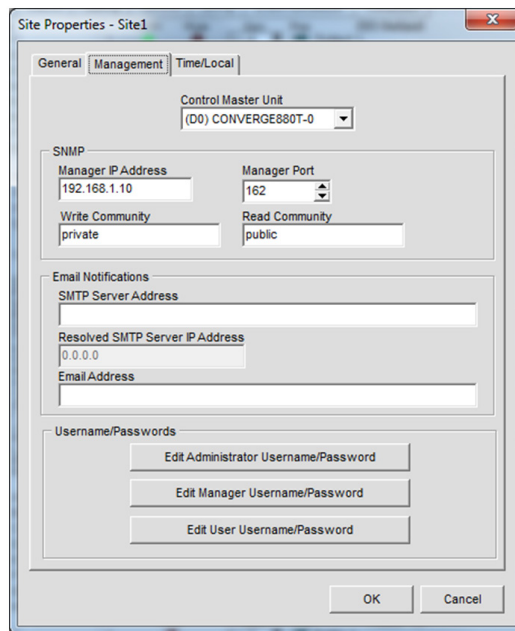
#### Background and Prerequisites

The screenshots shown in this document are derived from the online SimpleTester tutorial at [www.simplesoft.com](http://www.simplesoft.com). It is highly recommended that this tutorial be watched in its entirety for a more complete understanding of the software and its features.

To download the trial of SimpleTester, visit [http://www.simplesoft.com/download\\_mswin.html](http://www.simplesoft.com/download_mswin.html) and follow the instructions.

#### Configuring the CONVERGE Pro

1. With CONVERGE Console, connect to the CONVERGE Pro site.
2. From the **View Menu** select **File -> Site Properties**.
3. In the **Site Properties** screen, select the **Management** tab.
4. Select the CONVERGE Pro unit used for the Control Master (see Control Master Unit below).
5. In the **Manager IP Address** field, enter in the IP address of the PC that is running SimpleTester. All other fields in the SNMP section can be left at the default values. Click on the **OK** button. A prompt to reboot will be displayed. Select **Yes**, and allow the CONVERGE Pro Unit to reboot. Once the CONVERGE Pro unit boots, it is ready for SNMP.



### Control Master Unit

All CONVERGE Pro units in the site appear in the **Control Master Unit** list. Selecting a Control Master unit designates that unit as controller of the SNMP interactions for the entire site across IP-based networks. To use SNMP, the Control Master unit must be connected to the LAN via IP.

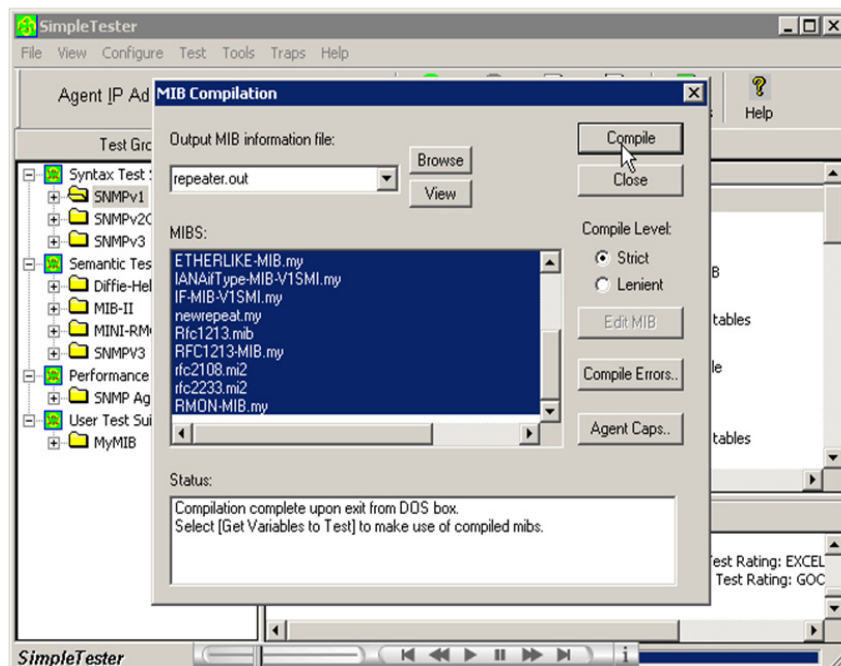
All other units in the site are Control Slave units. Control Slave units send information through the Control Master unit for use with the SNMP Manager.

Serial Control interactions and Audio Control interactions are not affected by a units Control Master designation.

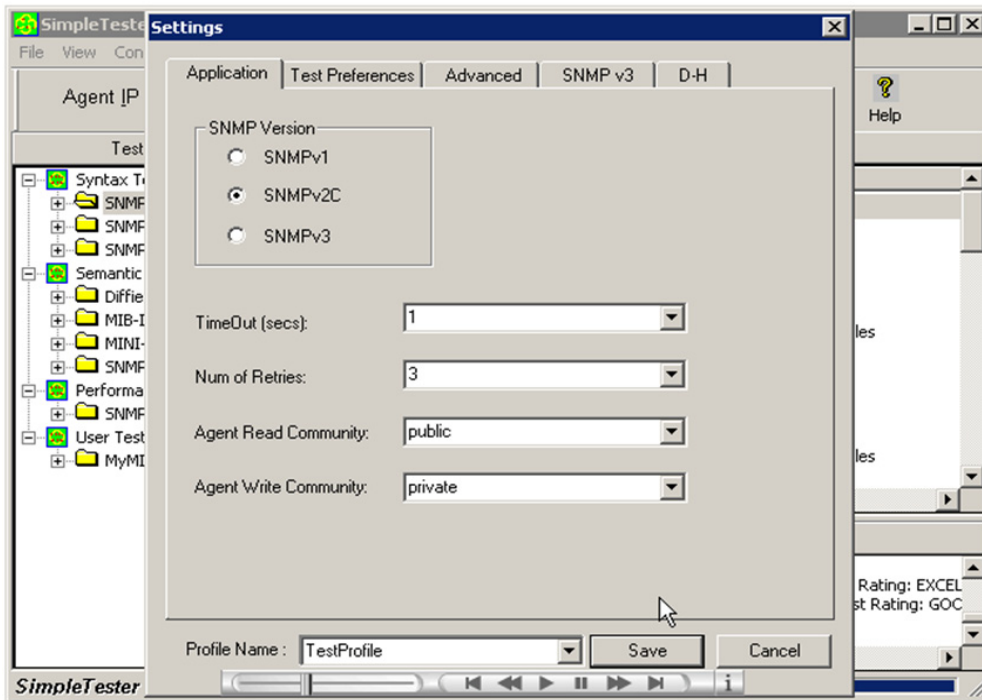
**NOTE:** All units are Control Slave units by default.

### Using SimpleSoft SimpleTester

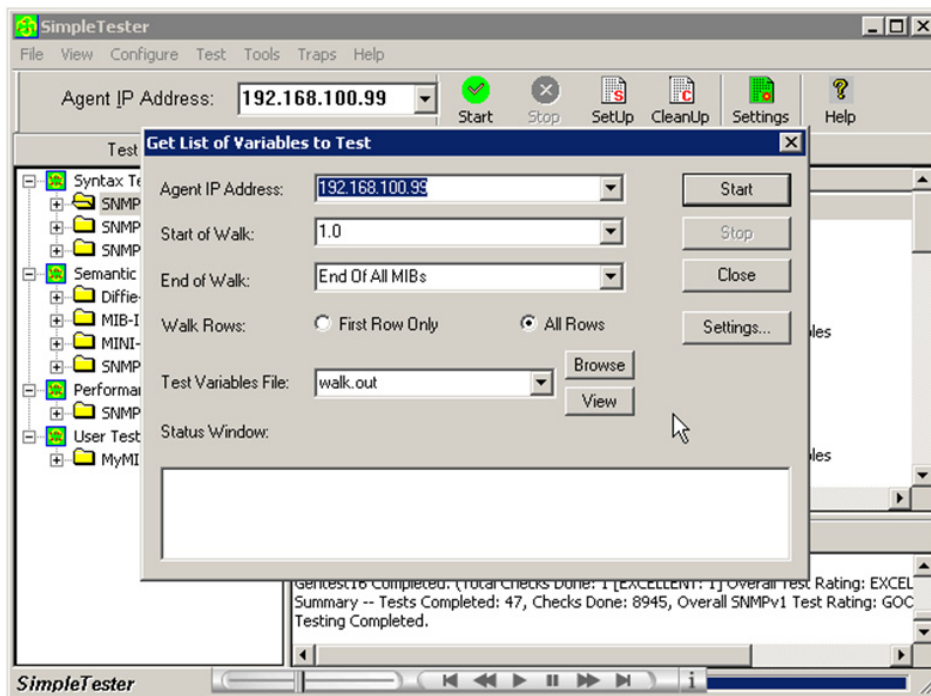
After downloading the SimpleTester software and receiving your license key, load the Management Information Base files (MIB's) for the CONVERGE Pro into the SimpleTester environment. The MIB's for any of the CONVERGE Pro products are available from the ClearOne web site at [www.clearone.com/resources#professional\\_audio](http://www.clearone.com/resources#professional_audio) in the Software Downloads and Release Notes area. Highlight all of the MIB files and select **Compile**.



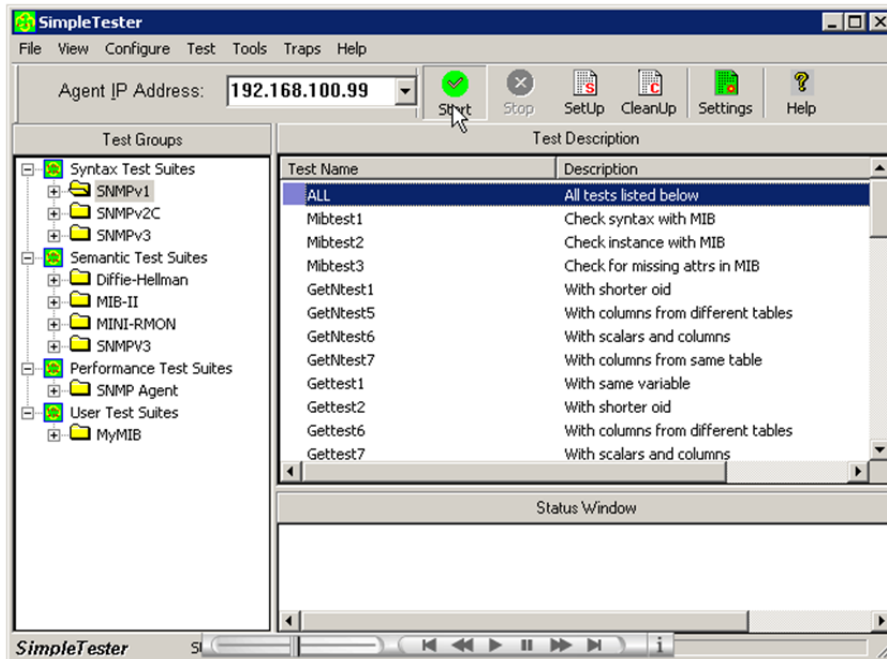
Verify the settings in SimpleTester. The CONVERGE Pro unit uses the SNMPv2C protocol. All other settings can be left at default.



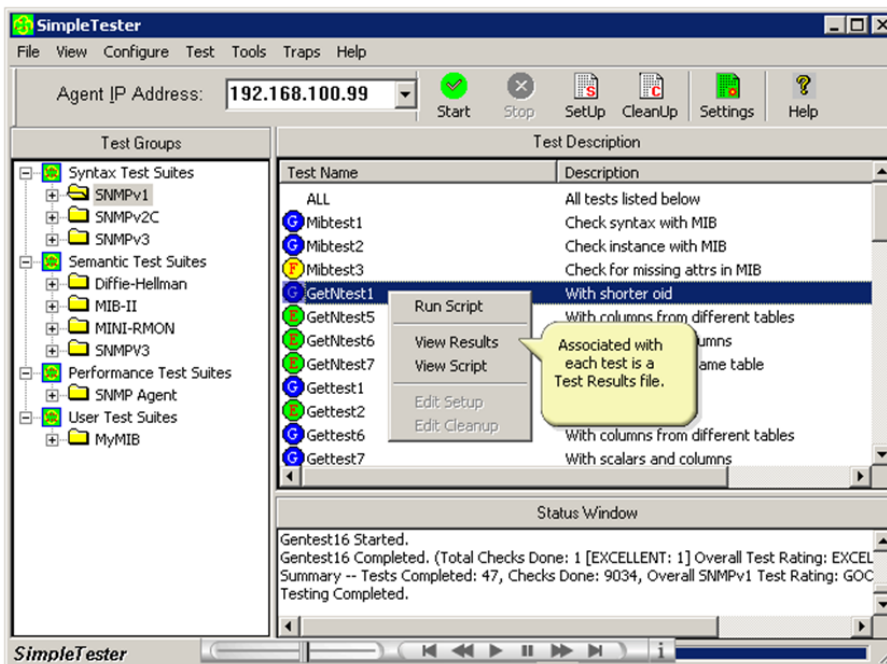
SimpleTester must also connect to the "Agent," which is the CONVERGE Pro Master Control unit as denoted in CONVERGE Console. This connection is necessary to define the variable elements in the MIB elements and create a complete testing environment.



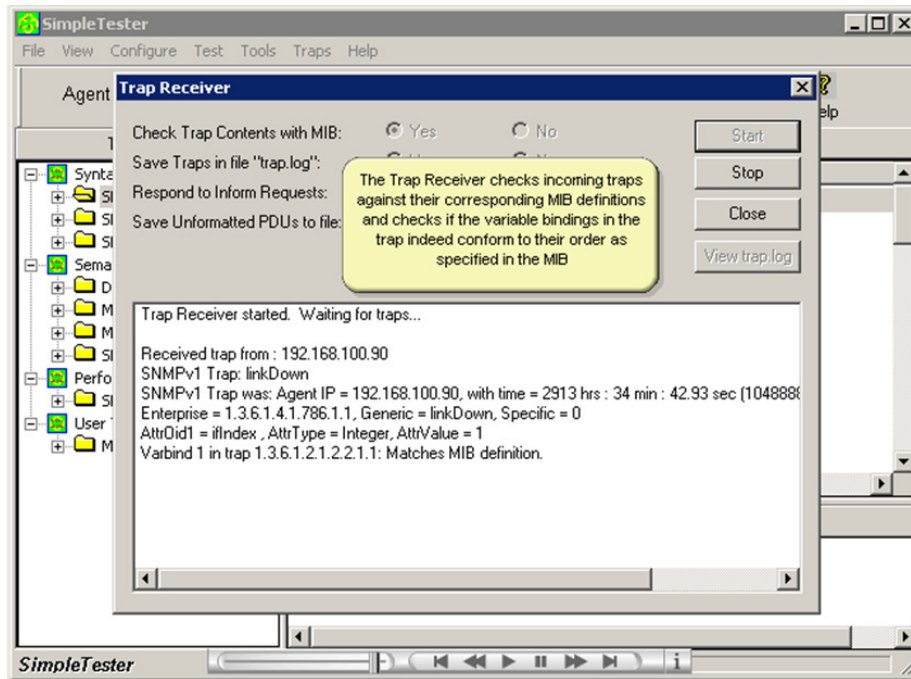
To test all available CONVERGE Pro SNMP parameters, simply select **ALL** from the test selection dialog window. This will sequentially run each command and evaluate the response from the CONVERGE Pro.



You can right-click on the command and click **View Results**. This will open a Notepad text file with all the related data.



SimpleTester also has the ability to detect and evaluate "Traps." This information, provided by the CONVERGE Pro, is based on events such as Reboot, Call Active/Inactive and others.



The following is a list of event items for Traps:

- The CONVERGE Pro is Safety Muted
- Errors occur when the CONVERGE Pro Boots
- DSP Errors on the CONVERGE Pro.
- System Check Results of the CONVERGE Pro
- Reset of the CONVERGE Pro Unit
- Default of the CONVERGE Pro Unit
- A Preset has ran on the CONVERGE Pro
- A Macro has ran on the CONVERGE Pro
- There is an incoming call to the CONVERGE Pro
- The duration of the call after the CONVERGE Pro goes on hook
- A G-link (E-bus) communication change
- A firmware upload to the CONVERGE Pro

## Conclusion

This document is a quick guide for the use of SimpleSoft SimpleTester to test SNMP on the CONVERGE Pro product Line. If further assistance is required, please contract ClearOne Technical Support at 1-800-283-5936 or email at [tech.support@clearone.com](mailto:tech.support@clearone.com).

### HEADQUARTERS:

#### Salt Lake City, UT USA

5225 Wiley Post Way  
Suite 500  
Salt Lake City, UT 84116

Tel: 801.975.7200

Toll Free: 800.945.7730

Fax: 801.977.0087

E-mail: [sales@clearone.com](mailto:sales@clearone.com)

#### EMEA

Tel: 44 (0) 1189.036.053  
E-mail: [global@clearone.com](mailto:global@clearone.com)

#### APAC

Tel: +011.852.3590.4526  
E-mail: [global@clearone.com](mailto:global@clearone.com)

#### LATAM

Tel: 801.974.3621  
E-mail: [global@clearone.com](mailto:global@clearone.com)

#### TechSales

Tel: 800.705.2103  
E-mail: [techsales@clearone.com](mailto:techsales@clearone.com)

#### Technical Support

Tel: 800.283.5936  
E-mail: [tech.support@clearone.com](mailto:tech.support@clearone.com)