

ClearOne[®]



COLLABORATE™ - Conferencing Solutions

SEAT LICENSE ACTIVATION

INSTALLATION AND USER GUIDE

Table of Contents

COLLABORATE SEAT LICENSE ACTIVATION OVERVIEW

Installing the Application.....	1
Bank Dongle	1

USING THE SEAT LICENSE ACTIVATION PROGRAM

Obtain Generated Key from COLLABORATE Desktop	2
Import Generated Key into the Seat License Activation Program.....	3
Check Status of License Bank	3
Number of Licenses.....	3
License Types.....	3
Input File.....	4
Create Seat License Key as a Text File.....	5
Importing the Seat License Key into COLLABORATE Desktop	6

SEAT LICENSE ACTIVATION BANK UPDATE

Obtaining the Upgrade License File.....	7
Upgrading the License Bank.....	7
Upgrade Conditions	8
Upgrade Tracking.....	8
Extra Seat Licenses	8

COLLABORATE SEAT LICENSE ACTIVATION OVERVIEW

There are two methods commonly used to provide a seat license for an installed instance of COLLABORATE Desktop:

A Single Seat License Dongle - Purchased with the Collaborate Desktop application and plugged into an open USB port on the computer where COLLABORATE Desktop is running.

A Seat License Key - Generated by the Seat License Activation program and imported into the COLLABORATE Desktop application.

Each installed instance of COLLABORATE Desktop not using a dongle requires a unique, nontransferable Seat License Key to fully operate beyond its 30-day trial period. The Seat License Activation application allows a reseller to generate valid, seat license keys for installed instances of COLLABORATE Desktop software. The reseller generates the seat license keys using the software and the USB Bank Dongle containing the licenses purchased from ClearOne. When the seat license key is generated it is sent as a text file to the user to import into the COLLABORATE Desktop application.

This document details the use of the Seat License Activation software and Bank Dongle.

INSTALLING THE APPLICATION

The Seat License Activation program is obtained from ClearOne and is distributed with the Bank Dongle. The application is installed running the Licensebank.msi installer distributed on the CD.

Execute the installer program and follow the prompts; select the location on your computer drive where the program will install and if the program will be available to all users of the computer or the currently logged-in user.

After installation, the Seat License Activation program will be presented as an icon on the desktop.

BANK DONGLE

The purchased number and type of seat licenses are recorded in the USB Bank Dongle. The Seat License Activation application will not operate without the Bank Dongle. A Bank Dongle contains licenses for either the Desktop HD or Desktop Executive version of COLLABORATE Desktop (whichever was purchased), but not a mix of license types. A separate dongle is needed for each bank of license types.



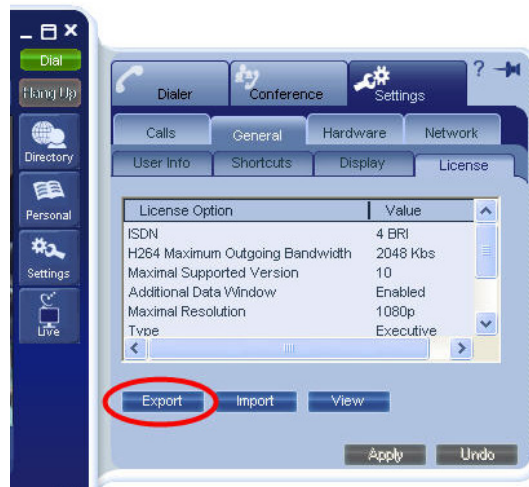
USING THE SEAT LICENSE ACTIVATION PROGRAM

Creation of a seat license using the Seat License Activation program and installing it into COLLABORATE Desktop consists of several steps:

- Obtain Generated Key from COLLABORATE Desktop
- Import Generated Key into the Seat License Activation Program
- Create Seat License Key as a Text File
- Import Seat License Key Text File into COLLABORATE Desktop

OBTAIN GENERATED KEY FROM COLLABORATE DESKTOP

To create the Generated Key, open COLLABORATE Desktop on the computer requiring the seat license. Navigate to the **Settings>General>License** drawer. Click on the **Export** button, then save the export as a text file.

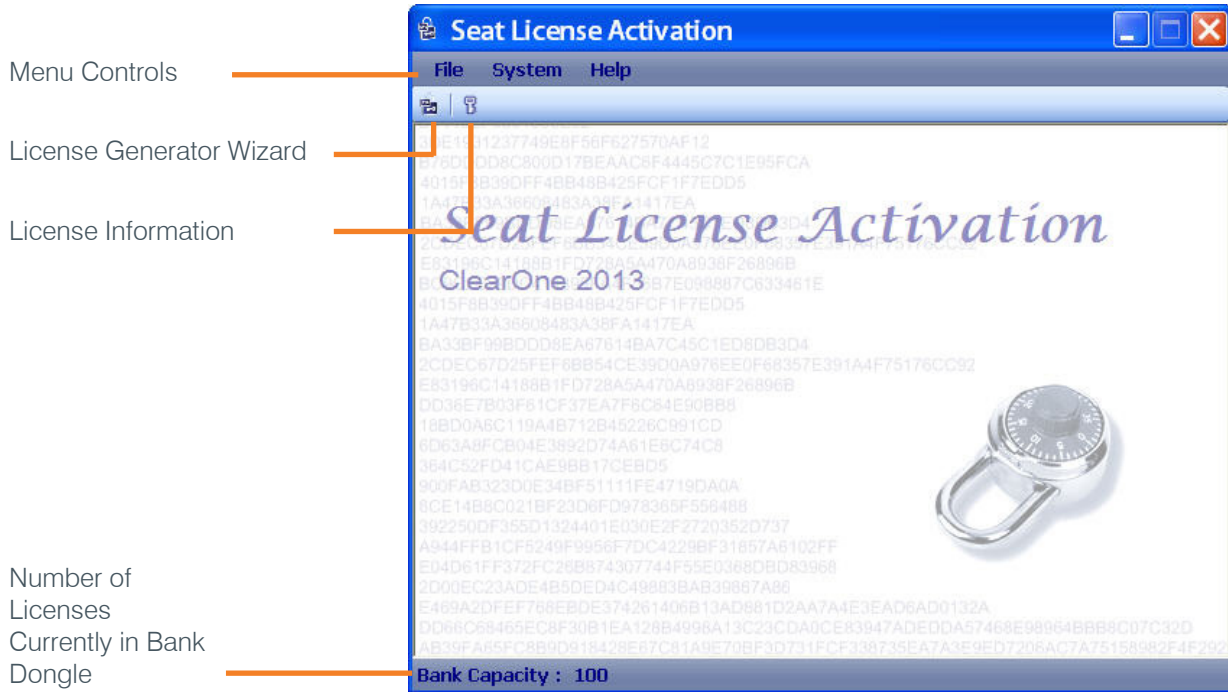


To help keep track of the files, give the file a name when you export it that indicates which COLLABORATE Desktop it belongs to. Copy or send this text file to the computer running the Seat License Activation program for use in creating the Seat Licence key.

- » Note: A Generated Key must be created for *each* COLLABORATE Desktop to create it's own unique Seat License key.

IMPORT GENERATED KEY INTO THE SEAT LICENSE ACTIVATION PROGRAM

Insert the Bank Dongle into an available USB port and double-click on the Seat License Activation program icon to load the program and the main screen appears:



Check Status of License Bank Number of Licenses

The main screen displays the **Bank Capacity** showing the number of unused licenses remaining in the Bank Dongle. This number will decrease by one each time a Seat license is generated until all of the licenses in the Bank Dongle are used.

License Types

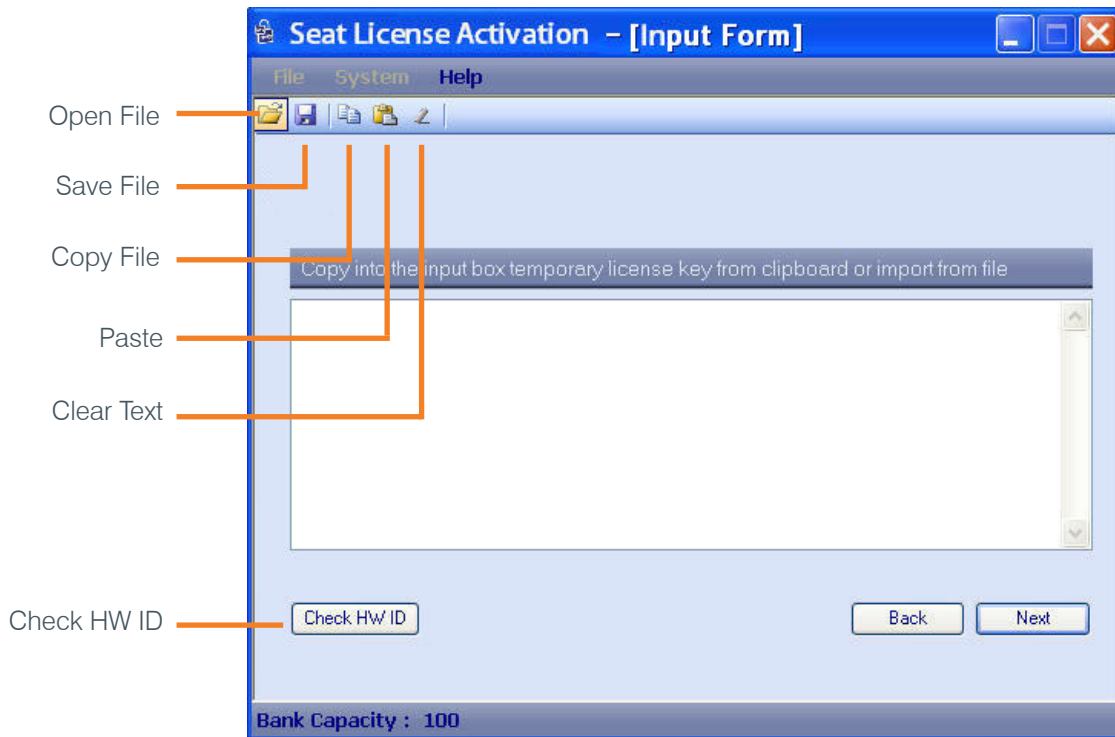
The **License Information** icon opens a window listing the type of licenses (HD or Executive) and the COLLABORATE Desktop characteristics associated with that type of license.

Licence Bank options	
Type	Collaborate Desktop Executive
Maximal Resolution	720p default
Recording	Enabled
Laptop Sharing	Disabled
Additional Data Window	Enabled
ISDN	0
H264 Max Out Bandwidth	2048
Max Supported Version	10

Close

Input File

When you have received the Generate Key for the COLLABORATE Desktop computer you wish to grant a Seat License, click on the **License Generator Wizard** icon on the main screen of the Seat License Activation program. The **Input Form** window appears.



The icon controls at the top of the window and the buttons allow the user to:

Open the Generate Key file. A screen opens to locate and open the file.

Save the file. A screen opens to select a location and save the file.

Copy allows the text to be copied from the window to the clipboard for other use.

Paste allows the Generate Key to be brought into the window from another program, such as an email message.

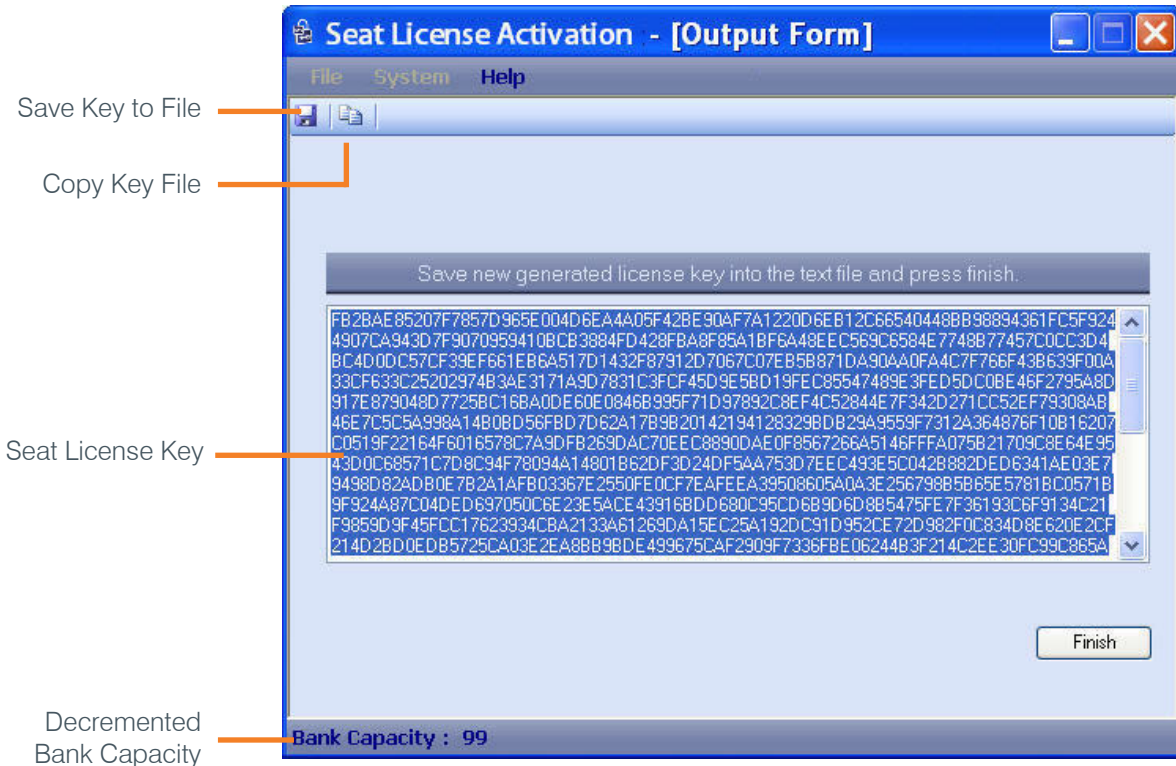
Clear Text clears the window.

Check HW ID is used after the Generate Key is imported. It allows the user to discover the Hardware ID (MAC Address) within the Generate Key. It is used mainly for trouble shooting when an end user claims the Seat License license received is not working on COLLABORATE Desktop. The Seat License Activation user can check that the MAC address he retrieves with the Check HW ID is the same as the MAC Address the COLLABORATE Desktop user sees on his PC. (Displayed when running "ipconfig /all" at the Command prompt.)

- » **Note:** The text of the Generate Key that appears in the window is a long encoded ASCII character string containing unique data about the workstation and COLLABORATE Desktop software that is essential to generating the Seat License for the workstation. This must not be altered or the Generate Key will be invalid.

CREATE SEAT LICENSE KEY AS A TEXT FILE

When the Generate Key is in the application, click on the **Next** button. You are then shown the newly created Seat License key in the **Output Form** window.



After the Seat License Key has been created, you have the option to save it to file or copy it to the clipboard by using either the **Save** or **Copy** icons at the top of the screen.

Send or copy the Seat License Key to the workstation that originally provided the Generated Key for importing into the COLLABORATE Desktop application.

- » **Note:** The Seat License Key is valid only for the workstation that originally provided the Generated Key.

Click **Finish** to exit back to the opening screen of the application.

IMPORTING THE SEAT LICENSED KEY INTO COLLABORATE DESKTOP

To import the Seat License Key, open COLLABORATE Desktop on the computer requiring the seat license. Navigate to the **Settings>General>License** drawer. Click on the **Import** button, then navigate to retrieve the Seat License Key text file. Then click **Apply**.



The Seat License key is now integrated into the COLLABORATE Desktop application and the trial period license is replaced.

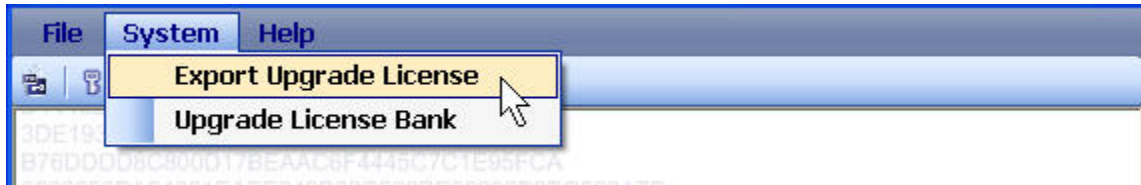
- » Note: A Seat License Key generated for a COLLABORATE Desktop workstation other than the one supplying the Generated Key will fail to import.

SEAT LICENSE ACTIVATION BANK UPDATE

After the number of seat licenses in the Bank Dongle used by the Seat License Activation program has been depleted you can order more licenses from ClearOne. To do this you must supply to ClearOne an Upgrade License text file created by your Seat Licensing Activation program containing information about you application and Bank Dongle.

OBTAINING THE UPGRADE LICENSE FILE

Select **System>Export Upgrade License** from the Seat Licensing Activation program screen.



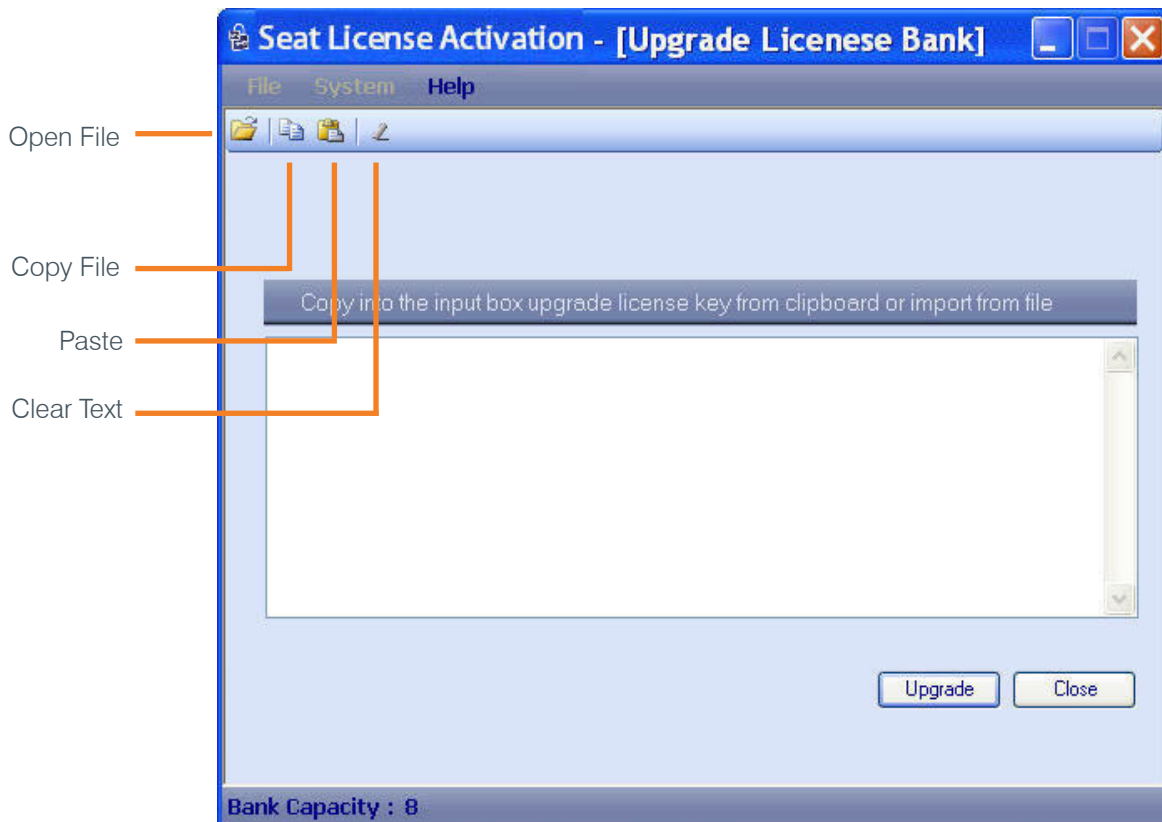
You are prompted to provide a file location and name for the Export Upgrade License text file that will be generated.

Send this text file to ClearOne to receive and upgrade of licenses for your Bank Dongle. Contact ClearOne by email at orders@clearone.com

UPGRADING THE LICENSE BANK

After you have received the text file from ClearOne with the upgrade to the license bank, place it in a directory accessible to the Seat License Activation program so it can be imported into the application.

Select **System>Upgrade License Bank** from the Seat Licensing Activation program screen.



The icon controls at the top of the window allow the user to:

Open the Upgrade file. A screen opens to locate and open the file.

Copy allows the text to be copied from the window to the clipboard for other use.

Paste allows the Upgrade file content to be brought into the window from another program, such as an email message.

Clear Text clears the window.

» **Note:** The text the Upgrade Key that appears of the window is a long encoded ASCII character string containing unique data about the workstation, Seat License Activation program, number of seat licenses in the Upgrade file and the Upgrade history. This must not be altered or the Upgrade file will be invalid.

Click on the **Open** button, then navigate to retrieve the Upgrade file text file, or paste it into the window. Then click **Upgrade**.

If the file is valid, the licenses in the Bank Dongle will be upgraded and incremented to the number of licenses purchased.

UPGRADE CONDITIONS

Upgrade Tracking

To avoid reuse of a previous license bank Upgrade, a counter is used in the process that keeps track of each Upgrade received. An error is produced if an earlier Upgrade is re-loaded into the license bank.

Extra Seat Licenses

Of course, if the seat license balance has been zeroed, then there will only be the new licenses for the Upgrade included in the file. However, if there are unused licenses when the Export License Upgrade file is created the number of unused seat licenses is recorded. These unused licenses can still be used until the Upgrade is received. Then, when the Upgrade is later received from ClearOne, this recorded number is updated with the actual number of unused licenses that remain. That number is stored until the next Upgrade cycle.

When a subsequent Upgrade occurs this unused balance from the earlier Upgrade is sent to ClearOne and will be included on the following Upgrade when it is created. The result is that each Upgrade will include bank credit for the unused licenses from the previous Upgrade.

> CLEARONE LOCATIONS

HEADQUARTERS:

Salt Lake City, UT USA

5225 Wiley Post Way
Suite 500
Salt Lake City, UT 84116

Tel: 801.975.7200

Toll Free: 800.945.7730

Fax: 801.977.0087

e-mail: sales@clearone.com

EMEA

Tel: 44 (0) 1189.036.053

e-mail: global@clearone.com

APAC

Tel: 852.3590.4526

e-mail: global@clearone.com

LATAM

Tel: 801.974.3621

e-mail: global@clearone.com

Techales

Tel: 800.705.2103

e-mail: techsales@clearone.com

Technical Support

Tel: 800.283.5936

e-mail: tech.support@clearone.com

© 2013 ClearOne All rights reserved. No part of this document may be reproduced in any form or by any means without written permission from ClearOne. ClearOne reserves specific privileges. Other product names may be trademarks of their respective owners. Information in this document is subject to change without notice.

COLLABORATE Seat License Activation Installation and User Guide - DOC-0094-001 (Rev. 1.0) - January, 2013