

Programming the Control and Status port of an AP800/400 using AP-Ware

Description

You can use the Control/Status Builder program in AP-Ware to program the Control/Status ports of AP800/400 units. This allows you to assign commands to the control and status pins.

Available commands

Control pins can be programmed to activate a command and make changes in the AP800/400. Status pins can be programmed to monitor changes in the AP800/400.

Control Commands		Status Commands	
LFP	Locks the front panel LCD of the unit	LFP	Provides LFP on/off status
PRESET	Recalls one of the six presets within the unit	PRESET	Provides active preset status
MUTE	Enables/disables input/output channel mute	MUTE	Provides mute on/off status on input/output
GAIN	Adjusts input or output channel gain	GAIN	Reports gain of input/output channel
AGC	Enables/disables input channel AGC state	AGC	Provides AGC on/off status on input channel
EQ	Enables/disables the 3-band EQ of a mic input	EQ	Provides EQ on/off status for mic inputs
GMODE	Sets gate mode for mic input (auto, manual on/off, override on/off)	GMODE	Provides status of mic gate mode (auto, manual on/off, override on/off)
CHAIRO	Enables/disables chairman override on mic input	CHAIRO	Provides chairman override on/off status
AA	Enables/disables auto answer*	AA	Reports status of auto answer*
AD	Enables/disables auto disconnect*	AD	Reports status of auto disconnect*
HOOK	Generates a hook flash*	HOOK	Reports status of hook flash*
NULL	Renulls the telephone echo canceller*	NULL	Reports status of null*
TE	Enables/disables the phone line into the room*	TE	Reports status of phone line*

*AP400 Only

To program control/status pins

1. Open the Control/Status Builder in AP-Ware.
2. If you are programming an AP800, select the port you want to program—either A or B (see Figure 2).
3. Select the pin you want to program. Status pins are green and Control pins are blue.
4. Select the pin state.
 - The command assigned to the Active (Low) state executes when the selected control pin is closed, shorted to ground.
 - The command assigned to the Inactive (High) state executes when the control pin is open, not shorted to ground.
 - The status command assigned to Active (Low) executes when the selected status pin is closed, sinking current.
 - The status command assigned to inactive (High) executes when the selected status pin is open, not sinking current.

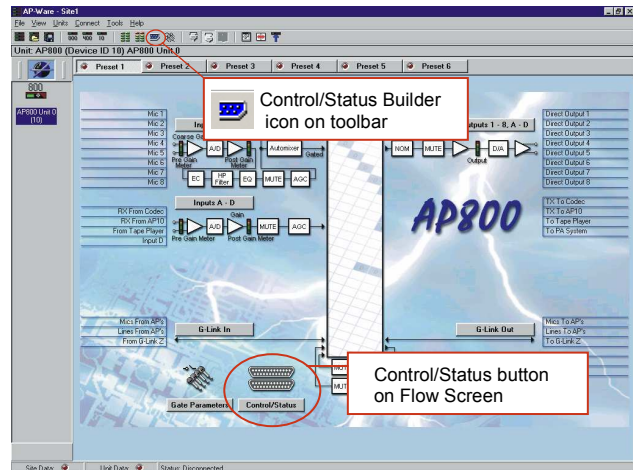


Figure 1. Control/Status Builder icons

5. Select the device to be affected by the command from the **Device** list.

Note: Do not select a Device when programming Status Pins because status pins can only provide status from the local unit. They will not show status from G-linked unit(s)

6. Select the command from the **Command** list. A description of the command appears in the Command Description box.
7. Select command arguments. A description of the argument appears in the Argument Description box.
8. Click **Apply**.
9. Repeat these steps to continue assigning pins or click **Close** to exit the Control/Status Builder window.

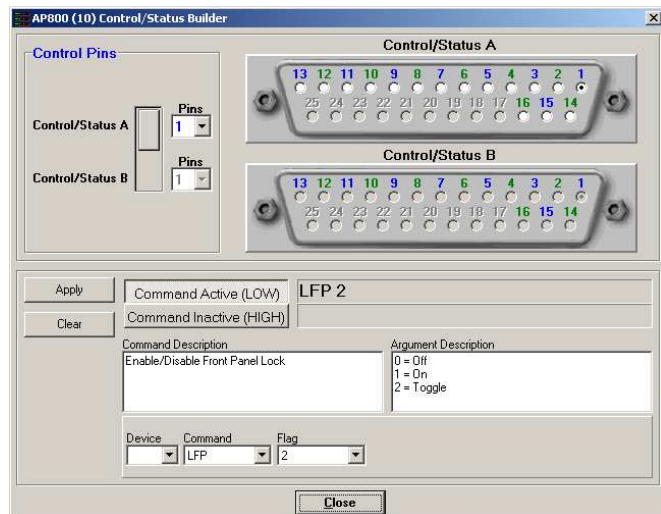


Figure 2. Control/Status Builder