

## Upgrading AP400/AP800 firmware for AP-Ware use

### Description

Your AP800 must have firmware version 2.4 or later and your AP400 must have firmware version 3.4 or later for proper data communications with AP-Ware. After you have installed AP-Ware on your computer, complete the following steps to upgrade firmware.

### To upgrade firmware

1. Connect an RS-232 serial cable from your PC to the AP unit. The cable must be a pin-to-pin configured cable with all 9 pins connected.
2. Determine the current firmware of you AP unit. The firmware version is displayed in the front panel LCD. If there is no letter following the version number, the firmware version is an “a” version. If the letter “e” follows the version number, the firmware version is an “e” version.
3. Open AP-Ware and click the **New Site** button on the toolbar.
4. The Site Properties window will open (see Figure1). Select the **Communications** tab. From the drop-down lists, select the desired **COM Port** and **Baud Rate**. The Baud Rate selected here must match the Baud Rate as set on the AP unit.
5. Set Flow Control to **None**. Click **OK** to save the settings and close the window.

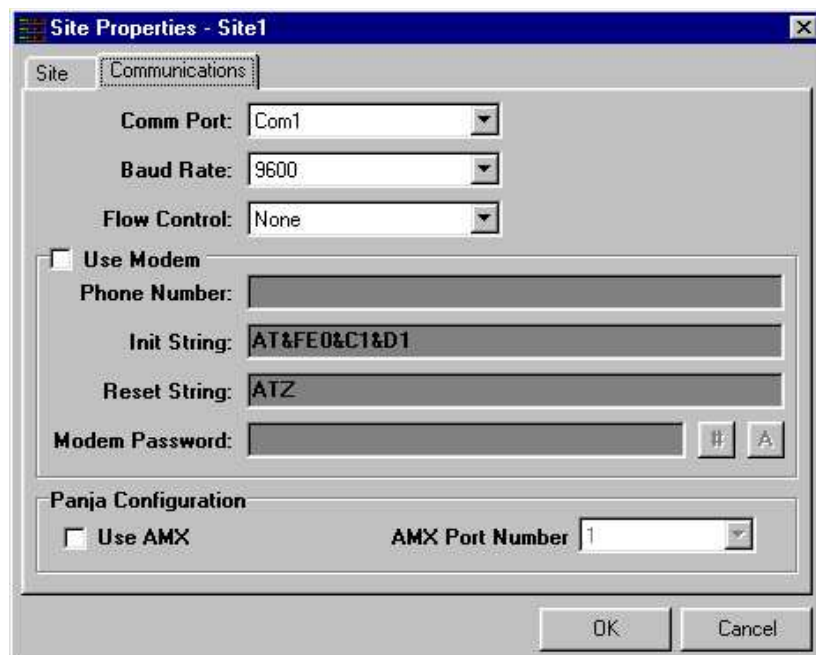



Figure 1. Site Properties window

6. Click the **Firmware Upload** button  on the toolbar to open the Firmware Uploader.
7. Click the **Browse** button (see Figure 2) to locate the firmware file.

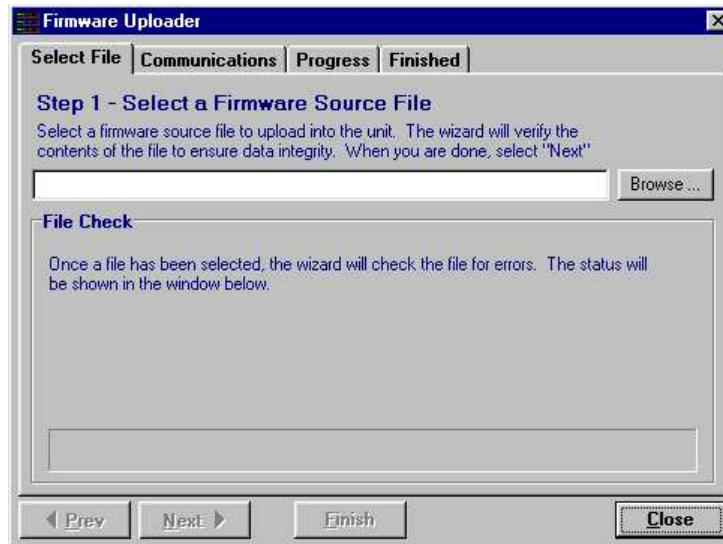


Figure 2. Firmware Uploader

8. Select the firmware file (see Figure 3) that matches the current firmware version on your AP unit and click **Open**.

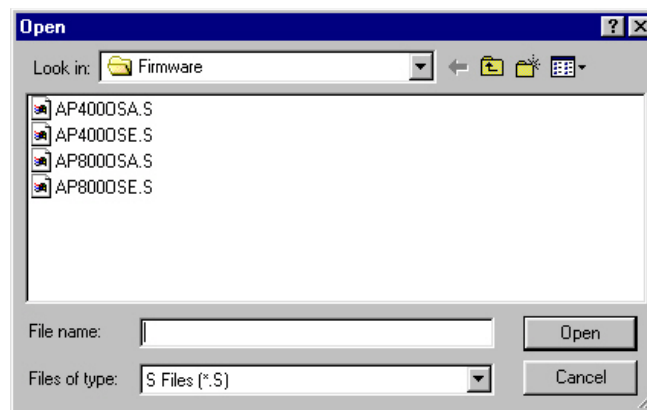


Figure 3. Firmware Uploader

**Note:** If there is no letter following the version number, select the appropriate *osa.s* file. If the letter *e* follows the version number, select the appropriate *ose.s* file. Example: AP400 VER 3.0 requires *Ap400osa.s*; AP400 VER 3.0e requires *Ap400ose.s*.

9. The Firmware Uploader checks the file for errors. Click **Next**.
10. Select the COM Port to be used for the connection and click **Finish**.
11. The Progress and Finished tabs display the progress of the file upload. When the firmware is uploaded, click Start Over on the Finished tab to upload firmware to another unit, or click Close to exit the program.

**Note:** Do not disconnect cables or otherwise interrupt the firmware upload process.